



LABORATORY GROWN DIAMOND REPORT

GRADING RESULTS

ADDITIONAL GRADING INFORMATION

Comments: This Laboratory Grown Diamond was created by Chemical Vapor Deposition (CVD) growth process and may include post-growth treatment.
Type IIa

LG601332390
Report verification at igi.org

Thin To Slightly Thick (Faceted)

16.5%

55%

36.4°

44%

41.3°

63.5%

Pointed

Red symbols indicate internal characteristics.
Green symbols indicate external characteristics.

GRADING SCALES

IF	VVS ¹⁻²	VS ¹⁻²	SI ¹⁻²	I ¹⁻³
Internally Flawless	Very Very Slightly Included	Very Slightly Included	Slightly Included	Included

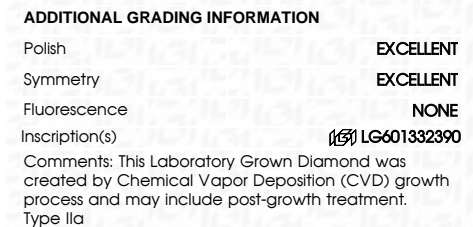
D E F G H I J Faint Very Light Light



FD - 10 20

 THIS DOCUMENT WAS PRODUCED WITH THE FOLLOWING SECURITY MEASURES: SPECIAL DOCUMENT PAPER, INK SCREENS, WATERMARK BACKGROUND DESIGNS, HOLOGRAM AND OTHER SECURITY FEATURES NOT LISTED AND DO EXCEED DOCUMENT SECURITY INDUSTRY GUIDELINES.

GRADING RESULTS	
Carat Weight	2.50 CARATS
Color Grade	G
Clarity Grade	VS 1
Cut Grade	EXCELLENT



September 27, 2023	
GR Report No. LG601332390	
ROUND BRILLIANT	
6.11 - 6.64 X 6.48 MM	
Color Grade	2.50 CARATS
Color Grade	G
Clarity Grade	VS 1
Cut Grade	EXCELLENT
Depth	63.5%
Table	55%
Girdle	Thin To Slightly Thick (Faceted)
Culet	Pointed
Polish	EXCELLENT
Symmetry	EXCELLENT
Fluorescence	NONE
Inscriptions(s)	4891 LG601332390
Comments:	
The Laboratory Grown Diamond was created by Chemical Vapor Deposition (CVD) growth process and may include post-growth treatment.	
Type IId	