



**ELECTRONIC COPY**

LG602310831

Report verification at igi.org

**LABORATORY GROWN DIAMOND REPORT**

October 10, 2023  
IGI Report Number **LG602310831**  
Description **LABORATORY GROWN  
DIAMOND**  
Shape and Cutting Style **ROUND BRILLIANT**  
Measurements **11.39 - 11.46 X 6.93 MM**

**GRADING RESULTS**

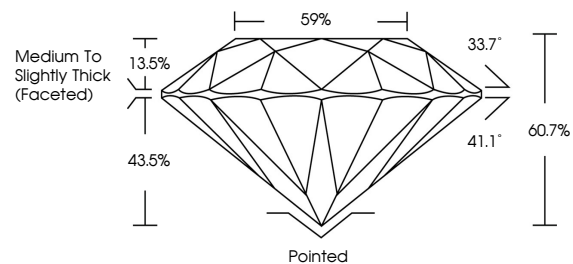
Carat Weight **5.59 CARATS**  
Color Grade **G**  
Clarity Grade **VS 1**  
Cut Grade **IDEAL**

**ADDITIONAL GRADING INFORMATION**

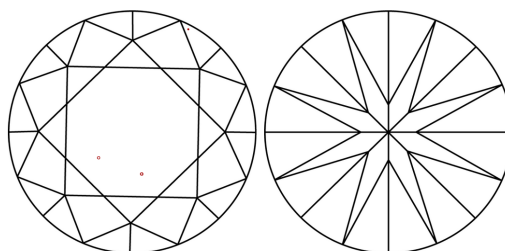
Polish **EXCELLENT**  
Symmetry **EXCELLENT**  
Fluorescence **NONE**  
Inscription(s) **IGI LG602310831**

Comments: This Laboratory Grown Diamond was created by Chemical Vapor Deposition (CVD) growth process and may include post-growth treatment. Type IIa

**PROPORTIONS**



**CLARITY CHARACTERISTICS**



**KEY TO SYMBOLS**

Red symbols indicate internal characteristics.  
Green symbols indicate external characteristics.

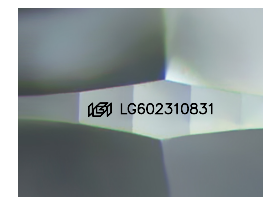
**GRADING SCALES**

**CLARITY**

| IF                  | VVS <sup>1-2</sup>          | VS <sup>1-2</sup>      | SI <sup>1-2</sup> | I <sup>1-3</sup> |
|---------------------|-----------------------------|------------------------|-------------------|------------------|
| Internally Flawless | Very Very Slightly Included | Very Slightly Included | Slightly Included | Included         |

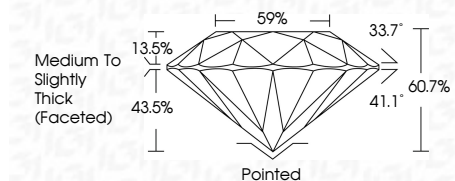
**COLOR**

| D | E | F | G | H | I | J | Faint | Very Light | Light |
|---|---|---|---|---|---|---|-------|------------|-------|
|---|---|---|---|---|---|---|-------|------------|-------|



Sample Image Used

October 10, 2023  
IGI Report Number **LG602310831**  
Description **LABORATORY GROWN  
DIAMOND**  
Shape and Cutting Style **ROUND BRILLIANT**  
Measurements **11.39 - 11.46 X 6.93 MM**  
**GRADING RESULTS**  
Carat Weight **5.59 CARATS**  
Color Grade **G**  
Clarity Grade **VS 1**  
Cut Grade **IDEAL**



**ADDITIONAL GRADING INFORMATION**

Polish **EXCELLENT**  
Symmetry **EXCELLENT**  
Fluorescence **NONE**  
Inscription(s) **IGI LG602310831**  
Comments: This Laboratory Grown Diamond was created by Chemical Vapor Deposition (CVD) growth process and may include post-growth treatment. Type IIa



**IGI**



|                  |                           |                 |                         |             |     |      |       |       |     |                                    |         |           |           |      |                 |
|------------------|---------------------------|-----------------|-------------------------|-------------|-----|------|-------|-------|-----|------------------------------------|---------|-----------|-----------|------|-----------------|
| October 10, 2023 | IGI Report No LG602310831 | ROUND BRILLIANT | 11.39 - 11.46 X 6.93 MM | 5.59 CARATS | G   | VS 1 | IDEAL | 60.7% | 59% | Medium To Slightly Thick (Faceted) | Pointed | EXCELLENT | EXCELLENT | NONE | IGI LG602310831 |
| IGI              | IGI                       | IGI             | IGI                     | IGI         | IGI | IGI  | IGI   | IGI   | IGI | IGI                                | IGI     | IGI       | IGI       | IGI  | IGI             |

Comments: This Laboratory Grown Diamond was created by Chemical Vapor Deposition (CVD) growth process and may include post-growth treatment. Type IIa