




# INTERNATIONAL GEMOLOGICAL INSTITUTE

ELECTRONIC COPY

## LABORATORY GROWN DIAMOND REPORT

LG602325263

### IGI LABORATORY GROWN DIAMOND ID REPORT

October 10, 2023  
IGI Report Number **LG602325263**  
**CUT CORNERED RECTANGULAR  
MODIFIED BRILLIANT**  
**5.91 X 3.88 X 2.72 MM**  
Carat Weight 0.55 CARAT  
Color Grade G  
Clarity Grade VS 1  
Polish EXCELLENT  
Symmetry EXCELLENT  
Fluorescence NONE  
Inscription(s)  LG602325263

Comments: This Laboratory Grown Diamond was created by Chemical Vapor Deposition (CVD) growth process and may include post-growth treatment. Type Ila

## LABORATORY GROWN DIAMOND REPORT

### IGI LABORATORY GROWN DIAMOND IDENTIFICATION REPORT

October 10, 2023  
IGI Report Number LG602325263  
Description LABORATORY GROWN DIAMOND  
Shape and Cutting Style CUT CORNERED RECTANGULAR MODIFIED  
BRILLIANT  
Measurements 5.91 X 3.88 X 2.72 MM

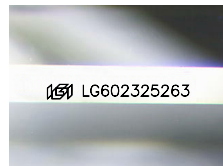
### GRADING RESULTS

Carat Weight 0.55 CARAT  
Color Grade G  
Clarity Grade VS 1

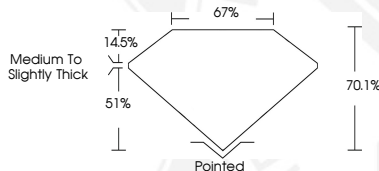
### ADDITIONAL GRADING INFORMATION

Polish EXCELLENT  
Symmetry EXCELLENT  
Fluorescence NONE  
Inscription(s)  LG602325263

Comments: This Laboratory Grown Diamond was created by Chemical Vapor Deposition (CVD) growth process and may include post-growth treatment.  
Type Ila



Sample Image Used



### IGI LABORATORY GROWN DIAMOND ID REPORT

October 10, 2023  
IGI Report Number **LG602325263**  
**CUT CORNERED RECTANGULAR  
MODIFIED BRILLIANT**  
**5.91 X 3.88 X 2.72 MM**  
Carat Weight 0.55 CARAT  
Color Grade G  
Clarity Grade VS 1  
Polish EXCELLENT  
Symmetry EXCELLENT  
Fluorescence NONE  
Inscription(s)  LG602325263

Comments: This Laboratory Grown Diamond was created by Chemical Vapor Deposition (CVD) growth process and may include post-growth treatment. Type Ila



THIS DOCUMENT WAS PRODUCED WITH THE FOLLOWING SECURITY MEASURES: SPECIAL DOCUMENT PAPER, INK SCREENS, WATERMARK, BACKGROUND DESIGN, HOLOGRAM AND OTHER SECURITY FEATURES NOT LISTED AND DO EXCEED DOCUMENT SECURITY INDUSTRY GUIDELINES.

For terms & conditions and to verify this report, please visit [www.igi.org](http://www.igi.org)