

ELECTRONIC COPY

LABORATORY GROWN DIAMOND REPORT

October 2, 2023	
IGI Report Number	LG602349436
Description	LABORATORY GROWN DIAMOND
Shape and Cutting Style	ROUND BRILLIANT
Measurements	7.21 - 7.25 X 4.48 MM

GRADING RESULTS

Carat Weight	1.45 CARAT
Color Grade	E
Clarity Grade	VS 1
Cut Grade	IDEAL

ADDITIONAL GRADING INFORMATION

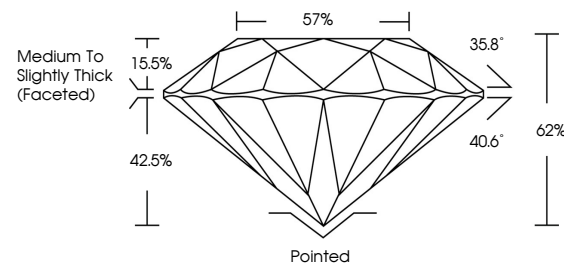
Polish	EXCELLENT
Symmetry	EXCELLENT
Fluorescence	NONE
Inscription(s)	15 LG602349436

Comments: As Grown - No indication of post-growth treatment.
This Laboratory Grown Diamond was created by High Pressure High Temperature (HPHT) growth process.
Type II

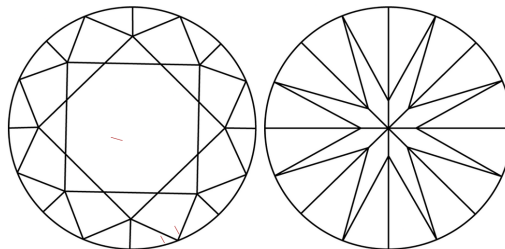
LABORATORY GROWN DIAMOND REPORT

LG602349436
Report verification at igi.org

PROPORTIONS



CLARITY CHARACTERISTICS



KEY TO SYMBOLS

Red symbols indicate internal characteristics.
Green symbols indicate external characteristics.

LABORATORY GROWN
DIAMOND REPORT

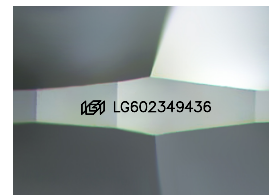
GRADING SCALES

CLARITY

IF	VVS ¹⁻²	VS ¹⁻²	SI ¹⁻²	I ¹⁻³
Internally Flawless	Very Very Slightly Included	Very Slightly Included	Slightly Included	Included

COLOR

D E F G H I J Faint Very Light Light



Sample Image Used



© IGI 2020, International Gemological Institute

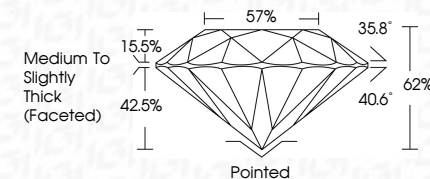
FD - 10 20

LABORATORY GROWN DIAMOND REPORT

October 2, 2023	
IGI Report Number	LG602349436
Description	LABORATORY GROWN DIAMOND
Shape and Cutting Style	ROUND BRILLIANT
Measurements	7.21 - 7.25 X 4.48 MM

GRADING RESULTS

Carat Weight	1.45 CARAT
Color Grade	E
Clarity Grade	VS 1
Cut Grade	IDEAL



ADDITIONAL GRADING INFORMATION

Polish	EXCELLENT
Symmetry	EXCELLENT
Fluorescence	NONE
Inscription(s)	LG LG602349436
Comments: As Grown - No indication of post-growth treatment.	
This Laboratory Grown Diamond was created by High Pressure High Temperature (HPHT) growth process.	
Type II	



October 2, 2023	GI Report No. LS-02349486	ROUND	1.65 CARAT	VVS 1	IDEAL	62%	57%	Medium to Slightly Thick (foofsted)	Pointed	EXCELLENT	EXCELLENT	NONE	1691 LGA02349486	Comments: None - No indication of post-growth treatment. The Laboratory Growth Diamond was created by High Pressure High Temperature (HPHT) growth process. Type II	
			17.21 - 7.25 x 4.48 MM	Color Weight	Color Grade	Clarity Grade	Cut Grade	Depth	Table	Girdle	Quel	Polish	Symmetry	Fluorescence	Inscriptions