



ELECTRONIC COPY

LABORATORY GROWN DIAMOND REPORT

October 18, 2023
 IGI Report Number **LG602360035**
 Description **LABORATORY GROWN
DIAMOND**
 Shape and Cutting Style **CUT CORNERED RECTANGULAR
MODIFIED BRILLIANT**
 Measurements **10.63 X 7.60 X 5.03 MM**
GRADING RESULTS
 Carat Weight **3.40 CARATS**
 Color Grade **E**
 Clarity Grade **SI 1**

ADDITIONAL GRADING INFORMATION

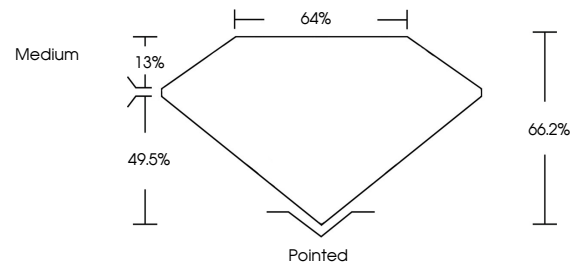
Polish **EXCELLENT**
 Symmetry **EXCELLENT**
 Fluorescence **NONE**
 Inscription(s) **IGI LG602360035**

Comments: This Laboratory Grown Diamond was created by Chemical Vapor Deposition (CVD) growth process and may include post-growth treatment. Type IIa

LABORATORY GROWN DIAMOND REPORT

LG602360035
 Report verification at igi.org

PROPORTIONS



**LABORATORY GROWN
DIAMOND REPORT**

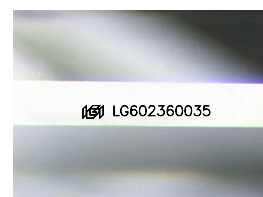
GRADING SCALES

CLARITY

| IF | VVS ¹⁻² | VS ¹⁻² | SI ¹⁻² | I ¹⁻³ |
|---------------------|-----------------------------|------------------------|-------------------|------------------|
| Internally Flawless | Very Very Slightly Included | Very Slightly Included | Slightly Included | Included |

COLOR

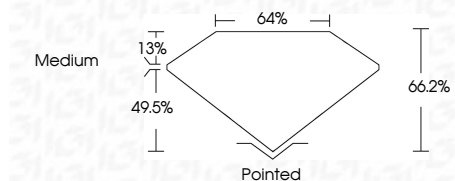
| D | E | F | G | H | I | J | Faint | Very Light | Light |
|---|---|---|---|---|---|---|-------|------------|-------|
|---|---|---|---|---|---|---|-------|------------|-------|



Sample Image Used

LABORATORY GROWN DIAMOND REPORT

October 18, 2023
 IGI Report Number **LG602360035**
 Description **LABORATORY GROWN
DIAMOND**
 Shape and Cutting Style **CUT CORNERED
RECTANGULAR MODIFIED
BRILLIANT**
 Measurements **10.63 X 7.60 X 5.03 MM**
GRADING RESULTS
 Carat Weight **3.40 CARATS**
 Color Grade **E**
 Clarity Grade **SI 1**



ADDITIONAL GRADING INFORMATION

Polish **EXCELLENT**
 Symmetry **EXCELLENT**
 Fluorescence **NONE**
 Inscription(s) **IGI LG602360035**
 Comments: This Laboratory Grown Diamond was created by Chemical Vapor Deposition (CVD) growth process and may include post-growth treatment. Type IIa



IGI



October 18, 2023
 IGI Report No **LG602360035**
CUT CORNERED RECT. MODIFIED BRILLIANT
10.63 X 7.60 X 5.03 MM
3.40 CARATS
 Carat Weight **E**
 Color Grade **SI 1**
 Clarity Grade **66.2%**
 Depth **49.5%**
 Table **Medium**
 Girdle
 Culet
 Polish **Pointed**
 Symmetry **EXCELLENT**
 Fluorescence **EXCELLENT**
 Inscription(s) **NONE**
 IGI LG602360035

Comments: This Laboratory Grown Diamond was created by Chemical Vapor Deposition (CVD) growth process and may include post-growth treatment. Type IIa