



**INTERNATIONAL
GEMOLOGICAL
INSTITUTE**

LABORATORY GROWN DIAMOND REPORT

IGI LABORATORY GROWN DIAMOND IDENTIFICATION REPORT

January 9, 2024
 IGI Report Number LG602365141
 Description LABORATORY GROWN DIAMOND
 Shape and Cutting Style ROUND BRILLIANT
 Measurements 5.22 - 5.25 X 3.25 MM

GRADING RESULTS

Carat Weight 0.55 CARAT
 Color Grade E
 Clarity Grade INTERNALLY FLAWLESS
 Cut Grade IDEAL

ADDITIONAL GRADING INFORMATION

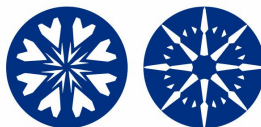
Polish EXCELLENT
 Symmetry EXCELLENT
 Fluorescence NONE
 Inscription(s) IGI LG602365141

Comments: HEARTS & ARROWS
 As Grown - No indication of post-growth treatment.
 This Laboratory Grown Diamond was created by High Pressure High
 Temperature (HPHT) growth process.
 Type II

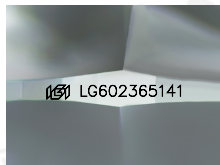
ELECTRONIC COPY

**LABORATORY GROWN
DIAMOND REPORT**

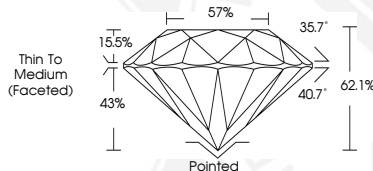
LG602365141



HEARTS & ARROWS



Sample Image Used



**IGI LABORATORY GROWN
DIAMOND ID REPORT**

January 9, 2024
 IGI Report Number **LG602365141**
ROUND BRILLIANT
5.22 - 5.25 X 3.25 MM
 Carat Weight 0.55 CARAT
 Color Grade E
 Clarity Grade IF
 Cut Grade IDEAL
 Polish EXCELLENT
 Symmetry EXCELLENT
 Fluorescence NONE
 Inscription(s) IGI LG602365141

Comments: HEARTS & ARROWS As Grown - No indication of post-growth treatment. This Laboratory Grown Diamond was created by High Pressure High Temperature (HPHT) growth process. Type II

**IGI LABORATORY GROWN
DIAMOND ID REPORT**

January 9, 2024
 IGI Report Number **LG602365141**
ROUND BRILLIANT
5.22 - 5.25 X 3.25 MM
 Carat Weight 0.55 CARAT
 Color Grade E
 Clarity Grade IF
 Cut Grade IDEAL
 Polish EXCELLENT
 Symmetry EXCELLENT
 Fluorescence NONE
 Inscription(s) IGI LG602365141

Comments: HEARTS & ARROWS As Grown - No indication of post-growth treatment. This Laboratory Grown Diamond was created by High Pressure High Temperature (HPHT) growth process. Type II

THIS DOCUMENT WAS PRODUCED WITH THE FOLLOWING SECURITY MEASURES: SPECIAL DOCUMENT PAPER, INK SCREENS, WATERMARK, BACKGROUND DESIGN, HOLOGRAM AND OTHER SECURITY FEATURES NOT LISTED AND DO EXCEED DOCUMENT SECURITY INDUSTRY GUIDELINES.

For terms & conditions and to verify this report, please visit www.igi.org