



ELECTRONIC COPY

LABORATORY GROWN DIAMOND REPORT

October 6, 2023
IGI Report Number LG602388494
Description LABORATORY GROWN DIAMOND
Shape and Cutting Style ROUND BRILLIANT
Measurements 10.29 - 10.32 X 6.30 MM

GRADING RESULTS

Carat Weight 4.08 CARATS
Color Grade D
Clarity Grade VS 1
Cut Grade IDEAL

ADDITIONAL GRADING INFORMATION

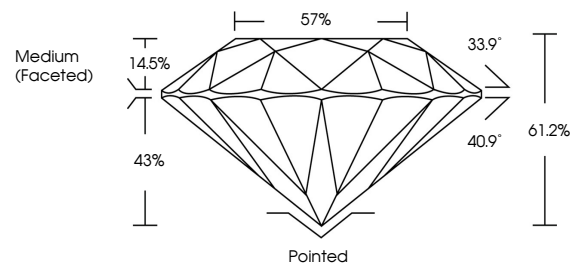
Polish EXCELLENT
Symmetry EXCELLENT
Fluorescence NONE
Inscription(s) IGI LG602388494

Comments: HEARTS & ARROWS
As Grown - No indication of post-growth treatment.
This Laboratory Grown Diamond was created by High Pressure High Temperature (HPHT) growth process.
Type II

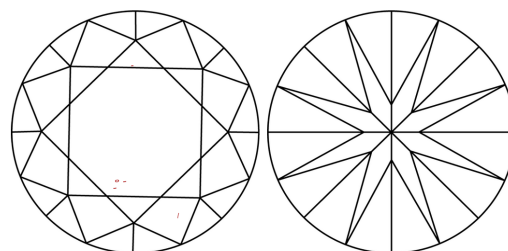
LABORATORY GROWN DIAMOND REPORT

LG602388494
Report verification at igi.org

PROPORTIONS



CLARITY CHARACTERISTICS



KEY TO SYMBOLS

Red symbols indicate internal characteristics.
Green symbols indicate external characteristics.



LABORATORY GROWN DIAMOND REPORT

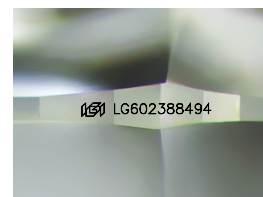
GRADING SCALES

CLARITY

Table showing clarity scales: IF, VVS 1-2, VS 1-2, SI 1-2, I 1-3. Internally Flawless, Very Very Slightly Included, Very Slightly Included, Slightly Included, Included.

COLOR

Table showing color scales: D, E, F, G, H, I, J, Faint, Very Light, Light.



Sample Image Used

LABORATORY GROWN DIAMOND REPORT

October 6, 2023
IGI Report Number LG602388494
Description LABORATORY GROWN DIAMOND
Shape and Cutting Style ROUND BRILLIANT
Measurements 10.29 - 10.32 X 6.30 MM

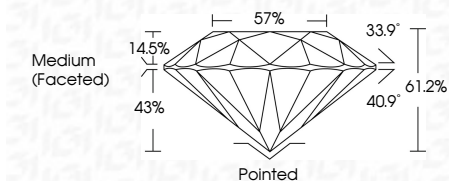
GRADING RESULTS

Carat Weight 4.08 CARATS
Color Grade D
Clarity Grade VS 1
Cut Grade IDEAL

ADDITIONAL GRADING INFORMATION

Polish EXCELLENT
Symmetry EXCELLENT
Fluorescence NONE
Inscription(s) IGI LG602388494

Comments: HEARTS & ARROWS
As Grown - No indication of post-growth treatment.
This Laboratory Grown Diamond was created by High Pressure High Temperature (HPHT) growth process.
Type II



Summary of report details including date, report number, measurements, carat weight, color grade, clarity grade, cut grade, and grading results.