



ELECTRONIC COPY

LABORATORY GROWN DIAMOND REPORT

October 11, 2023
 IGI Report Number **LG602399816**
 Description **LABORATORY GROWN
DIAMOND**
 Shape and Cutting Style **ROUND BRILLIANT**
 Measurements **6.72 - 6.76 X 4.18 MM**

GRADING RESULTS

Carat Weight **1.16 CARAT**
 Color Grade **G**
 Clarity Grade **VVS 2**
 Cut Grade **IDEAL**

ADDITIONAL GRADING INFORMATION

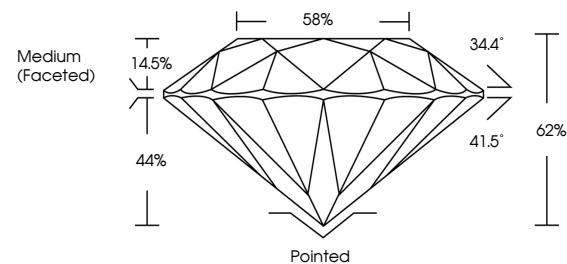
Polish **EXCELLENT**
 Symmetry **EXCELLENT**
 Fluorescence **NONE**
 Inscription(s) **IGI LG602399816**

Comments: This Laboratory Grown Diamond was created by Chemical Vapor Deposition (CVD) growth process and may include post-growth treatment. Type IIa

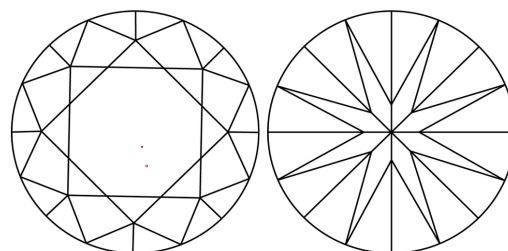
LABORATORY GROWN DIAMOND REPORT

LG602399816
 Report verification at igi.org

PROPORTIONS



CLARITY CHARACTERISTICS



KEY TO SYMBOLS

Red symbols indicate internal characteristics.
 Green symbols indicate external characteristics.

**LABORATORY GROWN
DIAMOND REPORT**

GRADING SCALES

CLARITY

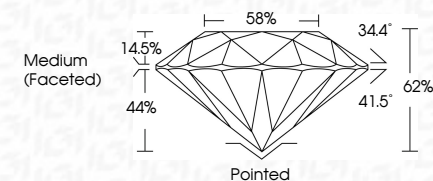
| IF | VVS ¹⁻² | VS ¹⁻² | SI ¹⁻² | I ¹⁻³ |
|---------------------|-----------------------------|------------------------|-------------------|------------------|
| Internally Flawless | Very Very Slightly Included | Very Slightly Included | Slightly Included | Included |

COLOR

| D | E | F | G | H | I | J | Faint | Very Light | Light |
|---|---|---|---|---|---|---|-------|------------|-------|
|---|---|---|---|---|---|---|-------|------------|-------|

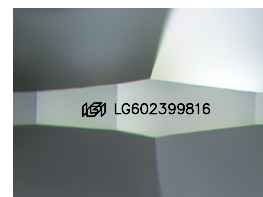
LABORATORY GROWN DIAMOND REPORT

October 11, 2023
 IGI Report Number **LG602399816**
 Description **LABORATORY GROWN
DIAMOND**
 Shape and Cutting Style **ROUND BRILLIANT**
 Measurements **6.72 - 6.76 X 4.18 MM**
GRADING RESULTS
 Carat Weight **1.16 CARAT**
 Color Grade **G**
 Clarity Grade **VVS 2**
 Cut Grade **IDEAL**



ADDITIONAL GRADING INFORMATION

Polish **EXCELLENT**
 Symmetry **EXCELLENT**
 Fluorescence **NONE**
 Inscription(s) **IGI LG602399816**
 Comments: This Laboratory Grown Diamond was created by Chemical Vapor Deposition (CVD) growth process and may include post-growth treatment. Type IIa



Sample Image Used



| | | | | | | | | | | | | | | |
|---------------------------|---------------------------|-----------------------|--------------|-------------|---------------|-----------|-------|-------|------------------|---------|-----------|-----------|--------------|-----------------|
| October 11, 2023 | IGI Report No LG602399816 | ROUND BRILLIANT | 1.16 CARAT | G | VVS 2 | IDEAL | 62% | 58% | Medium (Faceted) | Pointed | EXCELLENT | EXCELLENT | NONE | IGI LG602399816 |
| IGI Report No LG602399816 | ROUND BRILLIANT | 6.72 - 6.76 X 4.18 MM | Carat Weight | Color Grade | Clarity Grade | Cut Grade | Depth | Table | Gra | Culet | Polish | Symmetry | Fluorescence | Inscription(s) |

Comments: This Laboratory Grown Diamond was created by Chemical Vapor Deposition (CVD) growth process and may include post-growth treatment. Type IIa