



ELECTRONIC COPY

LG603333617

Report verification at igi.org

LABORATORY GROWN DIAMOND REPORT

October 28, 2023
IGI Report Number **LG603333617**
Description **LABORATORY GROWN
DIAMOND**
Shape and Cutting Style **PRINCESS CUT**
Measurements **6.51 X 6.30 X 4.64 MM**

GRADING RESULTS

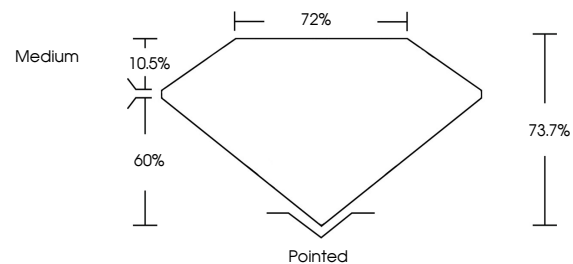
Carat Weight **1.71 CARAT**
Color Grade **G**
Clarity Grade **VS 1**

ADDITIONAL GRADING INFORMATION

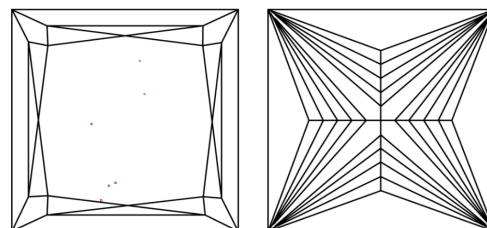
Polish **EXCELLENT**
Symmetry **EXCELLENT**
Fluorescence **NONE**
Inscription(s) **IGI LG603333617**

Comments: This Laboratory Grown Diamond was created by Chemical Vapor Deposition (CVD) growth process and may include post-growth treatment. Type IIa

PROPORTIONS



CLARITY CHARACTERISTICS



KEY TO SYMBOLS

Red symbols indicate internal characteristics.
Green symbols indicate external characteristics.

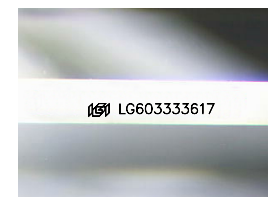
GRADING SCALES

CLARITY

IF	VVS ¹⁻²	VS ¹⁻²	SI ¹⁻²	I ¹⁻³
Internally Flawless	Very Very Slightly Included	Very Slightly Included	Slightly Included	Included

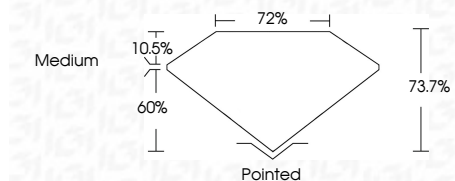
COLOR

D	E	F	G	H	I	J	Faint	Very Light	Light
---	---	---	---	---	---	---	-------	------------	-------



Sample Image Used

October 28, 2023
IGI Report Number **LG603333617**
Description **LABORATORY GROWN
DIAMOND**
Shape and Cutting Style **PRINCESS CUT**
Measurements **6.51 X 6.30 X 4.64 MM**
GRADING RESULTS
Carat Weight **1.71 CARAT**
Color Grade **G**
Clarity Grade **VS 1**



ADDITIONAL GRADING INFORMATION

Polish **EXCELLENT**
Symmetry **EXCELLENT**
Fluorescence **NONE**
Inscription(s) **IGI LG603333617**
Comments: This Laboratory Grown Diamond was created by Chemical Vapor Deposition (CVD) growth process and may include post-growth treatment. Type IIa



IGI

October 28, 2023
IGI Report No. **LG603333617**
PRINCESS CUT
6.51 X 6.30 X 4.64 MM
Carat Weight **1.71 CARAT**
Color Grade **G**
Clarity Grade **VS 1**
Depth **73.7%**
Table **72%**
Girdle **Medium**
Culet **Pointed**
Polish **EXCELLENT**
Symmetry **EXCELLENT**
Fluorescence **NONE**
Inscription(s) **IGI LG603333617**

Comments: This Laboratory Grown Diamond was created by Chemical Vapor Deposition (CVD) growth process and may include post-growth treatment. Type IIa

