



ELECTRONIC COPY

LABORATORY GROWN DIAMOND REPORT

Measurements 8.93 X 7.12 X 4.99 MM

GRADING RESULTS

Color Grade	H
-------------	---

Clarity Grade	SI 1
---------------	------

ADDITIONAL GRADING INFORMATION

Polish **EXCELLENT**

Symmetry **EXCELLENT**

Fluorescence **NONE**Inscription(s)  LG603358562

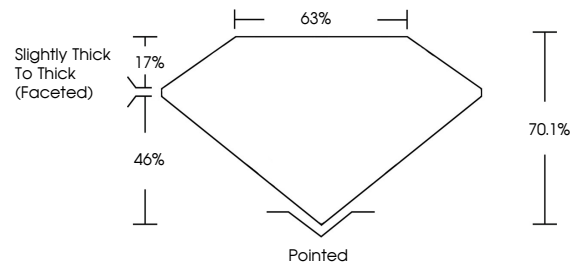
Comments: This Laboratory Grown Diamond was created by Chemical Vapor Deposition (CVD) growth process and may include post-growth treatment.
Type IIa

LABORATORY GROWN DIAMOND REPORT

LG603358562

Report verification at igi.org

PROPORTIONS

LABORATORY GROWN
DIAMOND REPORT

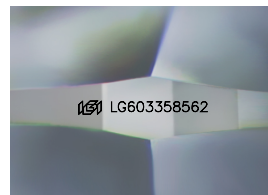
GRADING SCALES

CLARITY

IF	VVS ¹⁻²	VS ¹⁻²	SI ¹⁻²	I ¹⁻³
Internally Flawless	Very Very Slightly Included	Very Slightly Included	Slightly Included	Included

COLOR

D E F G H I J Faint Very Light Light



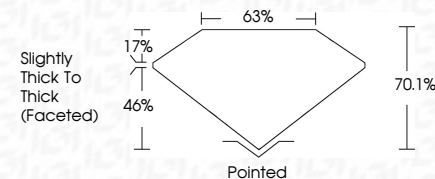
Sample Image Used

LABORATORY GROWN DIAMOND REPORT

Shape and Cutting Style	CUSHION BRILLIANT
Measurements	8.93 X 7.12 X 4.99 MM

GRADING RESULTS

Color Grade	H
-------------	---

Clarity Grade SI 1

ADDITIONAL GRADING INFORMATION

Polish **EXCELLEN**Symmetry **EXCELLENCE**

Fluorescence NONI

Inscription(s) LG60335856

Comments: This Laboratory Grown Diamond was created by Chemical Vapor Deposition (CVD) growth process and may include post-growth treatment.
Type IIa



IG



© IGI 2020, International Gemological Institute

FD - 10 20



THIS DOCUMENT WAS PRODUCED WITH THE FOLLOWING SECURITY MEASURES: SPECIAL DOCUMENT PAPER, INK SCREENS, WATERMARK, BACKGROUND DESIGNS, HOLOGRAM AND OTHER SECURITY FEATURES NOT LISTED AND DO EXCEED DOCUMENT SECURITY INDUSTRY GUIDELINES

www.igi.org

October 17, 2023	GJ Report No LG403935652	
CUSHION BRILLIANT	3.00 CARATS	
9.93 X 7.12 X 4.99 MM		
Carat Weight	H	S1
Color Grade		70.1%
Clarity Grade		65%
Depth		Slightly Thick to Thick (Faceted)
Table		
Girdle		
Symmetry		Polished
Fluorescence		EXCELLENT
Inscriptions(s)		EXCELLENT
		NONE
		lg403935652
Comments: This is a Fancy Grown Diamond was created by Chemical Vapor Deposition (CVD) growth process and may include post-growth treatment. Type IIa		