



ELECTRONIC COPY

LABORATORY GROWN DIAMOND REPORT

LG603358611
Report verification at igi.org

LABORATORY GROWN
DIAMOND REPORT

LABORATORY GROWN DIAMOND REPORT

LABORATORY GROWN DIAMOND REPORT

October 17, 2023
IGI Report Number **LG603358611**

Description **LABORATORY GROWN
DIAMOND**

Shape and Cutting Style **SQUARE CUSHION BRILLIANT**

Measurements **8.31 X 7.92 X 5.29 MM**

GRADING RESULTS

Carat Weight **3.02 CARATS**

Color Grade **H**

Clarity Grade **VS 1**

ADDITIONAL GRADING INFORMATION

Polish **EXCELLENT**

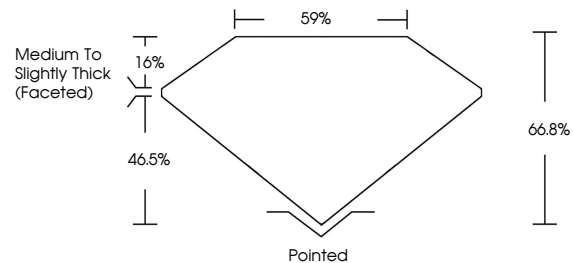
Symmetry **EXCELLENT**

Fluorescence **NONE**

Inscription(s) **IGI LG603358611**

Comments: This Laboratory Grown Diamond was created by Chemical Vapor Deposition (CVD) growth process and may include post-growth treatment. Type IIa

PROPORTIONS



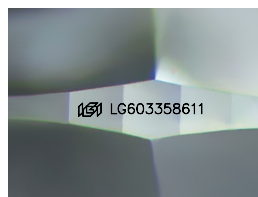
GRADING SCALES

CLARITY

IF	VVS ¹⁻²	VS ¹⁻²	SI ¹⁻²	I ¹⁻³
Internally Flawless	Very Very Slightly Included	Very Slightly Included	Slightly Included	Included

COLOR

D	E	F	G	H	I	J	Faint	Very Light	Light
---	---	---	---	---	---	---	-------	------------	-------



Sample Image Used

October 17, 2023
IGI Report Number **LG603358611**
Description **LABORATORY GROWN
DIAMOND**

Shape and Cutting Style **SQUARE CUSHION BRILLIANT**

Measurements **8.31 X 7.92 X 5.29 MM**

GRADING RESULTS

Carat Weight **3.02 CARATS**

Color Grade **H**

Clarity Grade **VS 1**

ADDITIONAL GRADING INFORMATION

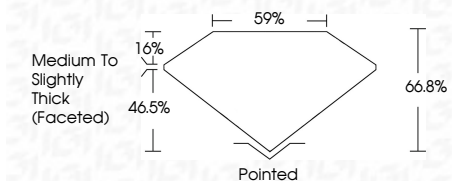
Polish **EXCELLENT**

Symmetry **EXCELLENT**

Fluorescence **NONE**

Inscription(s) **IGI LG603358611**

Comments: This Laboratory Grown Diamond was created by Chemical Vapor Deposition (CVD) growth process and may include post-growth treatment. Type IIa



IGI

October 17, 2023
IGI Report No LG603358611
SQUARE CUSHION BRILLIANT
8.31 X 7.92 X 5.29 MM
Carat Weight **3.02 CARATS**
Color Grade **H**
Clarity Grade **VS 1**
Table **66.8%**
Depth **46.5%**
Girdle **Medium to Slightly Thick (Faceted)**
Culet **Pointed**
Polish **EXCELLENT**
Symmetry **EXCELLENT**
Fluorescence **NONE**
Inscription(s) **IGI LG603358611**

Comments: This Laboratory Grown Diamond was created by Chemical Vapor Deposition (CVD) growth process and may include post-growth treatment. Type IIa