

ELECTRONIC COPY

LABORATORY GROWN DIAMOND REPORT

October 19, 2023	
IGI Report Number	LG604321951
Description	LABORATORY GROWN DIAMOND
Shape and Cutting Style	ROUND BRILLIANT
Measurements	7.17 - 7.22 X 4.40 MM

GRADING RESULTS

Carat Weight	1.40 CARAT
Color Grade	E
Clarity Grade	VVS 2
Cut Grade	IDEAL

ADDITIONAL GRADING INFORMATION

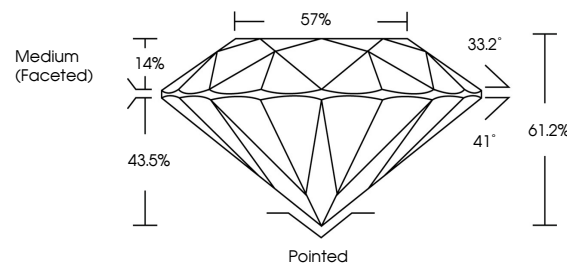
Polish	EXCELLENT
Symmetry	EXCELLENT
Fluorescence	NONE
Inscription(s)	15 LG604321951

Comments: As Grown - No indication of post-growth treatment.
This Laboratory Grown Diamond was created by High Pressure High Temperature (HPHT) growth process.
Type II

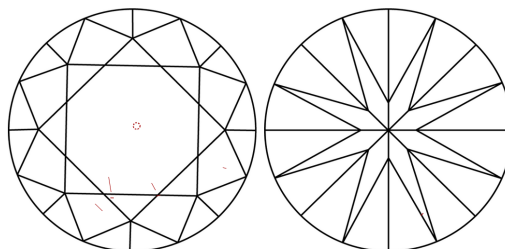
LABORATORY GROWN DIAMOND REPORT

LG604321951
Report verification at lgi.org

PROPORTIONS



CLARITY CHARACTERISTICS



KEY TO SYMBOLS

Red symbols indicate internal characteristics.
Green symbols indicate external characteristics.

LABORATORY GROWN
DIAMOND REPORT

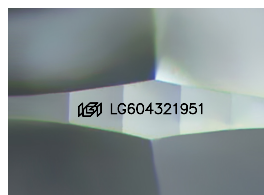
GRADING SCALES

CLARITY

IF	VVS ¹⁻²	VS ¹⁻²	SI ¹⁻²	I ¹⁻³
Internally Flawless	Very Very Slightly Included	Very Slightly Included	Slightly Included	Included

COLOR

D E F G H I J Faint Very Light Light



Sample Image Used



© IGI 2020, International Gemological Institute

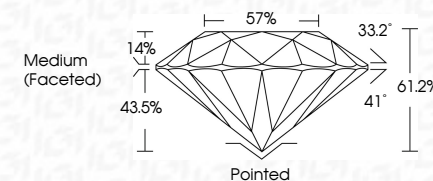
FD - 10 20

LABORATORY GROWN DIAMOND REPORT

October 19, 2023	
IGI Report Number	LG604321951
Description	LABORATORY GROWN DIAMOND
Shape and Cutting Style	ROUND BRILLIANT
Measurements	7.17 - 7.22 X 4.40 MM

GRADING RESULTS

Carat Weight	1.40 CARAT
Color Grade	E
Clarity Grade	VVS 2
Cut Grade	IDEAL



ADDITIONAL GRADING INFORMATION

Polish	EXCELLENT
Symmetry	EXCELLENT
Fluorescence	NONE
Inscription(s)	 LG604321951
Comments: As Grown - No indication of post-growth treatment.	
This Laboratory Grown Diamond was created by High Pressure High Temperature (HPHT) growth process.	
Type II	



	October 19, 2023
	GRI Report No LSG04821951
	ROUND BRILLIANT
	1.40 CARAT VVS 2 E IDEAL 61.2% 57% Medium (face-set)
	Printed EXCELLENT EXCELLENT SYMMETRY NONE #81LSG04821951
	Carat Weight Color Grade Clarity Grade Cut Grade Depth Table Girdle
	1.40 MM - 7.72 x 4.40 MM - 7.72 x 4.40 MM
	Comments: No indication of post-growth treatment. The Laboratory Grown Diamond was created by High Pressure High Temperature (HPHT) growth process.
	Type II