



ELECTRONIC COPY

LG604383621

Report verification at igi.org

LABORATORY GROWN DIAMOND REPORT

October 17, 2023
IGI Report Number **LG604383621**

Description **LABORATORY GROWN
DIAMOND**

Shape and Cutting Style **CUSHION BRILLIANT**

Measurements **6.77 X 5.34 X 3.63 MM**

GRADING RESULTS

Carat Weight **1.02 CARAT**

Color Grade **D**

Clarity Grade **VVS 2**

ADDITIONAL GRADING INFORMATION

Polish **EXCELLENT**

Symmetry **EXCELLENT**

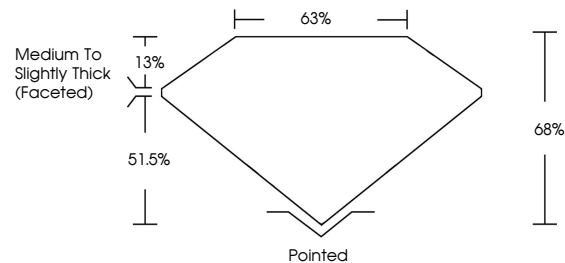
Fluorescence **NONE**

Inscription(s) **IGI LG604383621**

Comments: As Grown - No indication of post-growth treatment.

This Laboratory Grown Diamond was created by High Pressure High Temperature (HPHT) growth process. Type II

PROPORTIONS



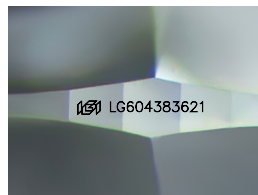
GRADING SCALES

CLARITY

IF	VVS ¹⁻²	VS ¹⁻²	SI ¹⁻²	I ¹⁻³
Internally Flawless	Very Very Slightly Included	Very Slightly Included	Slightly Included	Included

COLOR

D	E	F	G	H	I	J	Faint	Very Light	Light
---	---	---	---	---	---	---	-------	------------	-------



Sample Image Used

October 17, 2023

IGI Report Number **LG604383621**

Description **LABORATORY GROWN
DIAMOND**

Shape and Cutting Style **CUSHION BRILLIANT**

Measurements **6.77 X 5.34 X 3.63 MM**

GRADING RESULTS

Carat Weight **1.02 CARAT**

Color Grade **D**

Clarity Grade **VVS 2**

ADDITIONAL GRADING INFORMATION

Polish **EXCELLENT**

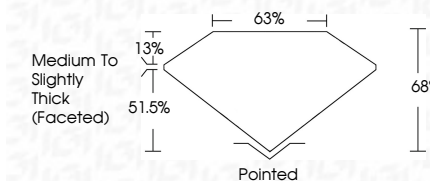
Symmetry **EXCELLENT**

Fluorescence **NONE**

Inscription(s) **IGI LG604383621**

Comments: As Grown - No indication of post-growth treatment.

This Laboratory Grown Diamond was created by High Pressure High Temperature (HPHT) growth process. Type II



IGI

October 17, 2023
IGI Report No LG604383621
CUSHION BRILLIANT
6.77 X 5.34 X 3.63 MM
Carat Weight 1.02 CARAT
Color Grade D
Clarity Grade VVS 2
Depth 68%
Table 63%
Girdle Medium to Slightly Thick (Faceted)
Culet Pointed
Polish EXCELLENT
Symmetry EXCELLENT
Fluorescence NONE
Inscription(s) IGI LG604383621
Comments: As Grown - No indication of post-growth treatment.
This Laboratory Grown Diamond was created by High Pressure High Temperature (HPHT) growth process. Type II