

ELECTRONIC COPY

LABORATORY GROWN DIAMOND REPORT

October 31, 2023	
IGI Report Number	LG604393351
Description	LABORATORY GROWN DIAMOND
Shape and Cutting Style	ROUND BRILLIANT
Measurements	6.83 - 6.86 X 4.15 MM

GRADING RESULTS

Carat Weight	1.20 CARAT
Color Grade	D
Clarity Grade	VS 1
Cut Grade	IDEAL

ADDITIONAL GRADING INFORMATION

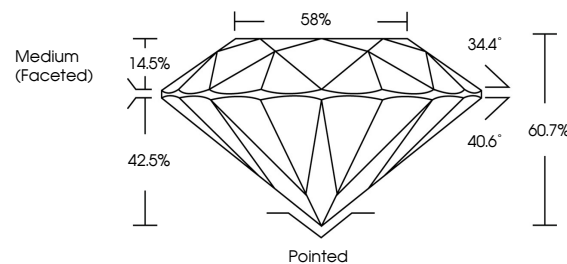
Polish	EXCELLENT
Symmetry	EXCELLENT
Fluorescence	NONE
Inscription(s)	15 LG604393351

Comments: As Grown - No indication of post-growth treatment.
This Laboratory Grown Diamond was created by High Pressure High Temperature (HPHT) growth process.
Type II

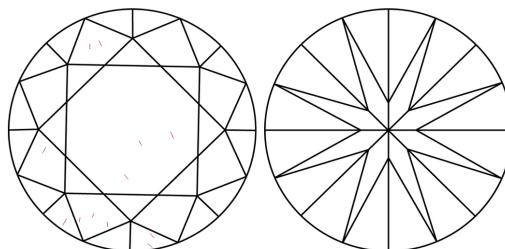
LABORATORY GROWN DIAMOND REPORT

LG604393351
Report verification at lgi.org

PROPORTIONS



CLARITY CHARACTERISTICS



KEY TO SYMBOLS

Red symbols indicate internal characteristics.
Green symbols indicate external characteristics.

LABORATORY GROWN
DIAMOND REPORT

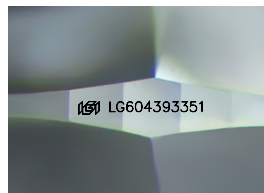
GRADING SCALES

CLARITY

IF	VVS ¹⁻²	VS ¹⁻²	SI ¹⁻²	I ¹⁻³
Internally Flawless	Very Very Slightly Included	Very Slightly Included	Slightly Included	Included

COLOR

D E F G H I J Faint Very Light Light



Sample Image Used



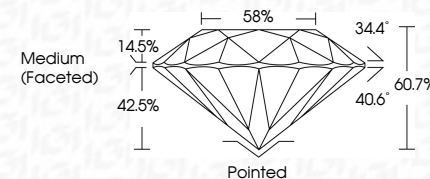
© IGI 2020, International Gemological Institute

FD - 10 20

LABORATORY GROWN DIAMOND REPORT

October 31, 2023	
IGI Report Number	LG604393351
Description	LABORATORY GROWN DIAMOND
Shape and Cutting Style	ROUND BRILLIANT
Measurements	6.83 - 6.86 X 4.15 MM

GRADING RESULTS	
Carat Weight	1.20 CARAT
Color Grade	D
Clarity Grade	VS 1
Cut Grade	IDEAL



ADDITIONAL GRADING INFORMATION

Polish	EXCELLENT
Symmetry	EXCELLENT
Fluorescence	NONE
Inscription(s)	 LG604393351
Comments: As Grown - No indication of post-growth treatment.	
This Laboratory Grown Diamond was created by High Pressure High Temperature (HPHT) growth process.	
Type II	



IG

Date: October 31, 2023	
GI Report No: LG60493831	
Growth Potential: ROUND Brilliant	
Size: 6.53 - 6.86 X 4.15 MM	
Color Grade: Color Grade D	Clarity Grade: VS 1
Cut Grade: Ideal	Depth: 60.7%
Table: 56%	Girdle: Medium (Faceted)
Symmetry: Excellent	Polarized: Polished
Fluorescence: None	Comments: EXCELLENT
Inscription(s): #6 LG604938351	Conclusion: NONE
No indication of post-growth treatment.	
This Laboratory Grown Diamond was created by High Pressure High Temperature (HPHT) growth process.	
Type II	