

ELECTRONIC COPY

LABORATORY GROWN DIAMOND REPORT

October 21, 2023	
IGI Report Number	LG605344767
Description	LABORATORY GROWN DIAMOND
Shape and Cutting Style	ROUND BRILLIANT
Measurements	6.37 - 6.42 X 3.97 MM

GRADING RESULTS

Carat Weight	1.01 CARAT
Color Grade	D
Clarity Grade	VVS 2
Cut Grade	IDEAL

ADDITIONAL GRADING INFORMATION

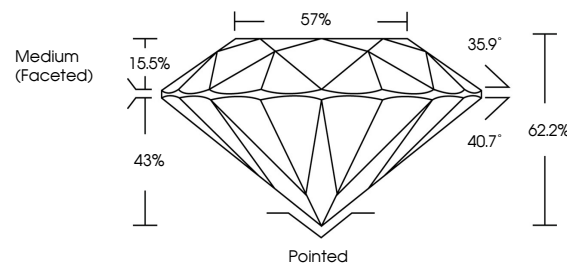
Polish	EXCELLENT
Symmetry	EXCELLENT
Fluorescence	NONE
Inscription(s)	15 LG605344767

Comments: As Grown - No indication of post-growth treatment.
This Laboratory Grown Diamond was created by High Pressure High Temperature (HPHT) growth process.
Type II

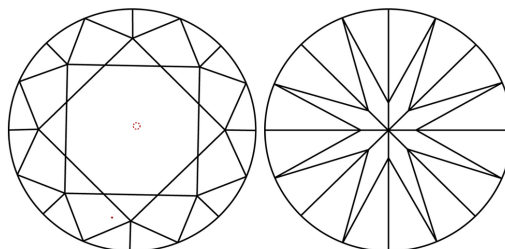
LABORATORY GROWN DIAMOND REPORT

LG605344767
Report verification at igi.org

PROPORTIONS



CLARITY CHARACTERISTICS



KEY TO SYMBOLS

Red symbols indicate internal characteristics.
Green symbols indicate external characteristics.

LABORATORY GROWN
DIAMOND REPORT

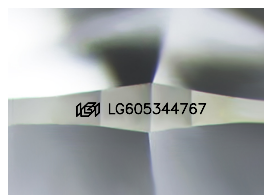
GRADING SCALES

CLARITY

IF	VVS ¹⁻²	VS ¹⁻²	SI ¹⁻²	I ¹⁻³
Internally Flawless	Very Very Slightly Included	Very Slightly Included	Slightly Included	Included

COLOR

D E F G H I J Faint Very Light Light



Sample Image Used



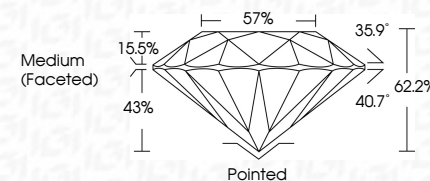
© IGI 2020, International Gemological Institute

FD - 10 20

LABORATORY GROWN DIAMOND REPORT

October 21, 2023	
IGI Report Number	LG605344767
Description	LABORATORY GROWN DIAMOND
Shape and Cutting Style	ROUND BRILLIANT
Measurements	6.37 - 6.42 X 3.97 MM

GRADING RESULTS	
Carat Weight	1.01 CARAT
Color Grade	D
Clarity Grade	VVS 2
Cut Grade	IDEAL



ADDITIONAL GRADING INFORMATION

Polish	EXCELLENT
Symmetry	EXCELLENT
Fluorescence	NONE
Inscription(s)	LG LG605344767
Comments: As Grown - No indication of post-growth treatment.	
This Laboratory Grown Diamond was created by High Pressure High Temperature (HPHT) growth process.	
Type II	



October 21, 2023	GI Report No. LG50334757		1.01 CARAT		<p>Pointed EXCELLENT EXCELLENT NONE #81 LG40334757</p>
ROUND BRILLIANT	3.37 - 6.42 x 3.97 MM		D	VVS 2	
	Color Grade	Clarity Grade	Depth	IDEAL	
		Cut Grade	Table	62.2%	
			Girdle	57%	
Medium (Faceted)					
<p>Comments: No indication of post-growth treatment. The Laboratory Crown Diamond was created by High Pressure High Temperature (dHfT) growth process.</p>					
	Cluef	Polish	Symmetry	Fluorescence	Inscription(s)