



ELECTRONIC COPY

LABORATORY GROWN DIAMOND REPORT

October 23, 2023
 IGI Report Number **LG605360280**
 Description **LABORATORY GROWN
DIAMOND**
 Shape and Cutting Style **PEAR BRILLIANT**
 Measurements **9.24 X 5.68 X 3.37 MM**

GRADING RESULTS

Carat Weight **1.01 CARAT**
 Color Grade **E**
 Clarity Grade **VVS 2**

ADDITIONAL GRADING INFORMATION

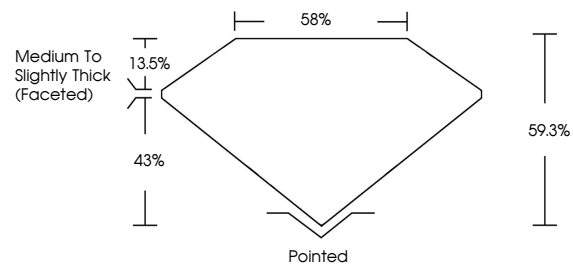
Polish **EXCELLENT**
 Symmetry **EXCELLENT**
 Fluorescence **NONE**
 Inscription(s) **IGI LG605360280**

Comments: As Grown - No indication of post-growth treatment.
 This Laboratory Grown Diamond was created by High Pressure High Temperature (HPHT) growth process.
 Type II

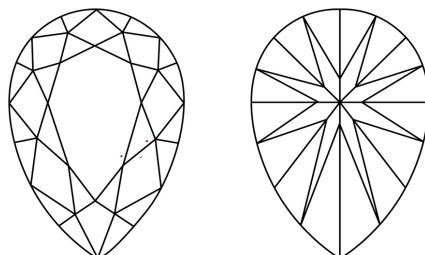
LABORATORY GROWN DIAMOND REPORT

LG605360280
 Report verification at igi.org

PROPORTIONS



CLARITY CHARACTERISTICS



KEY TO SYMBOLS

Red symbols indicate internal characteristics.
 Green symbols indicate external characteristics.

**LABORATORY GROWN
DIAMOND REPORT**

GRADING SCALES

CLARITY

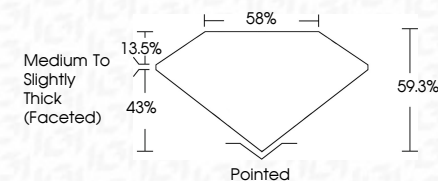
IF	VVS ¹⁻²	VS ¹⁻²	SI ¹⁻²	I ¹⁻³
Internally Flawless	Very Very Slightly Included	Very Slightly Included	Slightly Included	Included

COLOR

D	E	F	G	H	I	J	Faint	Very Light	Light
---	---	---	---	---	---	---	-------	------------	-------

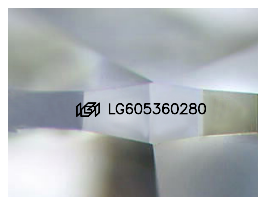
LABORATORY GROWN DIAMOND REPORT

October 23, 2023
 IGI Report Number **LG605360280**
 Description **LABORATORY GROWN
DIAMOND**
 Shape and Cutting Style **PEAR BRILLIANT**
 Measurements **9.24 X 5.68 X 3.37 MM**
GRADING RESULTS
 Carat Weight **1.01 CARAT**
 Color Grade **E**
 Clarity Grade **VVS 2**



ADDITIONAL GRADING INFORMATION

Polish **EXCELLENT**
 Symmetry **EXCELLENT**
 Fluorescence **NONE**
 Inscription(s) **IGI LG605360280**
 Comments: As Grown - No indication of post-growth treatment.
 This Laboratory Grown Diamond was created by High Pressure High Temperature (HPHT) growth process.
 Type II



Sample Image Used



IGI

October 23, 2023
 IGI Report No **LG605360280**
PEAR BRILLIANT
 9.24 X 5.68 X 3.37 MM
 Carat Weight **1.01 CARAT**
 Color Grade **E**
 Clarity Grade **VVS 2**
 Depth **43%**
 Table **13.5%**
 Girdle **Medium to Slightly Thick (Faceted)**
 Culet **Pointed**
 Polish **EXCELLENT**
 Symmetry **EXCELLENT**
 Fluorescence **NONE**
 Inscription(s) **IGI LG605360280**

Comments: As Grown - No indication of post-growth treatment.
 This Laboratory Grown Diamond was created by High Pressure High Temperature (HPHT) growth process.
 Type II