



**INTERNATIONAL
GEMOLOGICAL
INSTITUTE**

ELECTRONIC COPY

**LABORATORY GROWN
DIAMOND REPORT**

LG606322299

**IGI LABORATORY GROWN
DIAMOND ID REPORT**

November 1, 2023

IGI Report Number **LG606322299**

**CUT CORNERED RECTANGULAR
MODIFIED BRILLIANT**

6.35 X 4.33 X 2.93 MM

Carat Weight	0.71 CARAT
Color Grade	F
Clarity Grade	VS 2
Polish	EXCELLENT
Symmetry	VERY GOOD
Fluorescence	NONE
Inscription(s)	LG606322299

Comments: This Laboratory Grown Diamond was created by Chemical Vapor Deposition (CVD) growth process and may include post-growth treatment. Type Ila

LABORATORY GROWN DIAMOND REPORT

IGI LABORATORY GROWN DIAMOND IDENTIFICATION REPORT

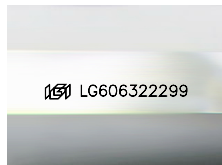
November 1, 2023

IGI Report Number **LG606322299**

Description **LABORATORY GROWN DIAMOND**

Shape and Cutting Style **CUT CORNERED RECTANGULAR MODIFIED
BRILLIANT**

Measurements **6.35 X 4.33 X 2.93 MM**



Sample Image Used

GRADING RESULTS

Carat Weight **0.71 CARAT**

Color Grade **F**

Clarity Grade **VS 2**

ADDITIONAL GRADING INFORMATION

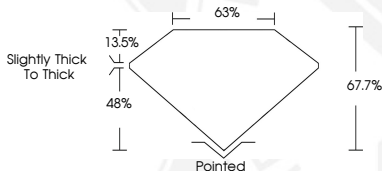
Polish **EXCELLENT**

Symmetry **VERY GOOD**

Fluorescence **NONE**

Inscription(s) **LG606322299**

Comments: This Laboratory Grown Diamond was created by Chemical Vapor Deposition (CVD) growth process and may include post-growth treatment. Type Ila



**IGI LABORATORY GROWN
DIAMOND ID REPORT**

November 1, 2023

IGI Report Number **LG606322299**

**CUT CORNERED RECTANGULAR
MODIFIED BRILLIANT**

6.35 X 4.33 X 2.93 MM

Carat Weight	0.71 CARAT
Color Grade	F
Clarity Grade	VS 2
Polish	EXCELLENT
Symmetry	VERY GOOD
Fluorescence	NONE
Inscription(s)	LG606322299

Comments: This Laboratory Grown Diamond was created by Chemical Vapor Deposition (CVD) growth process and may include post-growth treatment. Type Ila



THIS DOCUMENT WAS PRODUCED WITH THE FOLLOWING SECURITY MEASURES: SPECIAL DOCUMENT PAPER, INK SCREENS, WATERMARK, BACKGROUND DESIGN, HOLOGRAM AND OTHER SECURITY FEATURES NOT LISTED AND DO EXCEED DOCUMENT SECURITY INDUSTRY GUIDELINES.

For terms & conditions and to verify this report, please visit www.igi.org