



ELECTRONIC COPY

LABORATORY GROWN DIAMOND REPORT

November 2, 2023
 IGI Report Number **LG606350221**
 Description **LABORATORY GROWN
DIAMOND**
 Shape and Cutting Style **ROUND BRILLIANT**
 Measurements **10.18 - 10.23 X 6.21 MM**

GRADING RESULTS

Carat Weight **4.02 CARATS**
 Color Grade **D**
 Clarity Grade **VS 2**
 Cut Grade **IDEAL**

ADDITIONAL GRADING INFORMATION

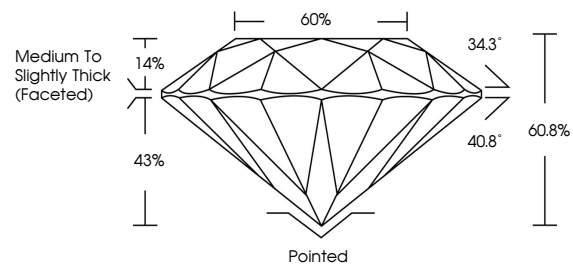
Polish **EXCELLENT**
 Symmetry **EXCELLENT**
 Fluorescence **NONE**
 Inscription(s) **LG606350221**

Comments: HEARTS & ARROWS
 This Laboratory Grown Diamond was created by
 Chemical Vapor Deposition (CVD) growth process and
 may include post-growth treatment.
 Type IIa

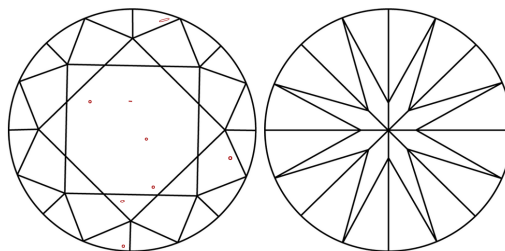
LABORATORY GROWN DIAMOND REPORT

LG606350221
 Report verification at igi.org

PROPORTIONS



CLARITY CHARACTERISTICS



KEY TO SYMBOLS

Red symbols indicate internal characteristics.
 Green symbols indicate external characteristics.



**LABORATORY GROWN
DIAMOND REPORT**

GRADING SCALES

CLARITY

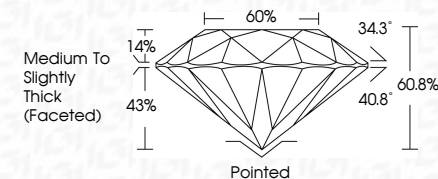
IF	VVS ¹⁻²	VS ¹⁻²	SI ¹⁻²	I ¹⁻³
Internally Flawless	Very Very Slightly Included	Very Slightly Included	Slightly Included	Included

COLOR

D	E	F	G	H	I	J	Faint	Very Light	Light

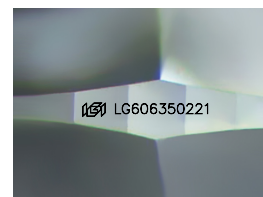
LABORATORY GROWN DIAMOND REPORT

November 2, 2023
 IGI Report Number **LG606350221**
 Description **LABORATORY GROWN
DIAMOND**
 Shape and Cutting Style **ROUND BRILLIANT**
 Measurements **10.18 - 10.23 X 6.21 MM**
GRADING RESULTS
 Carat Weight **4.02 CARATS**
 Color Grade **D**
 Clarity Grade **VS 2**
 Cut Grade **IDEAL**



ADDITIONAL GRADING INFORMATION

Polish **EXCELLENT**
 Symmetry **EXCELLENT**
 Fluorescence **NONE**
 Inscription(s) **LG606350221**
 Comments: HEARTS & ARROWS
 This Laboratory Grown Diamond was created by
 Chemical Vapor Deposition (CVD) growth process and
 may include post-growth treatment.
 Type IIa



Sample Image Used



IGI

November 2, 2023
 IGI Report No **LG606350221**
ROUND BRILLIANT
 10.18 - 10.23 X 6.21 MM
 Carat Weight **4.02 CARATS**
 Color Grade **D**
 Clarity Grade **VS 2**
 Cut Grade **IDEAL**
 Depth **60.8%**
 Table **60%**
 Girdle **Medium To Slightly Thick (Faceted)**
 Culet **Pointed**
 Polish **EXCELLENT**
 Symmetry **EXCELLENT**
 Fluorescence **NONE**
 Inscription(s) **IGI LG606350221**
 Comments: HEARTS & ARROWS
 This Laboratory Grown Diamond was
 created by Chemical Vapor Deposition
 (CVD) growth process and may include
 post-growth treatment.
 Type IIa