



# INTERNATIONAL GEMOLOGICAL INSTITUTE

ELECTRONIC COPY

## LABORATORY GROWN DIAMOND REPORT

LG607300975

### IGI LABORATORY GROWN DIAMOND ID REPORT

February 19, 2024  
IGI Report Number **LG607300975**  
**CUT CORNERED RECTANGULAR  
MODIFIED BRILLIANT**  
**6.86 X 4.88 X 3.13 MM**  
Carat Weight 0.91 CARAT  
Color Grade E  
Clarity Grade VVS 2  
Cut Grade VERY GOOD  
Polish EXCELLENT  
Symmetry EXCELLENT  
Fluorescence NONE  
Inscription(s)  LG607300975  
Comments: As Grown - No indication of post-growth treatment. This Laboratory Grown Diamond was created by High Pressure High Temperature (HPHT) growth process. Type II

## LABORATORY GROWN DIAMOND REPORT

### IGI LABORATORY GROWN DIAMOND IDENTIFICATION REPORT

February 19, 2024  
IGI Report Number LG607300975  
Description LABORATORY GROWN DIAMOND  
Shape and Cutting Style CUT CORNERED RECTANGULAR MODIFIED  
BRILLIANT  
Measurements 6.86 X 4.88 X 3.13 MM

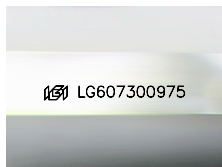
### GRADING RESULTS

Carat Weight 0.91 CARAT  
Color Grade E  
Clarity Grade VVS 2  
Cut Grade VERY GOOD

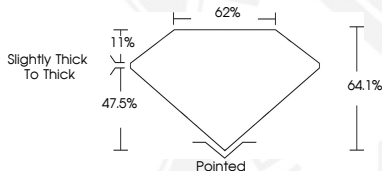
### ADDITIONAL GRADING INFORMATION

Polish EXCELLENT  
Symmetry EXCELLENT  
Fluorescence NONE  
Inscription(s)  LG607300975

Comments: As Grown - No indication of post-growth treatment.  
This Laboratory Grown Diamond was created by High Pressure High Temperature (HPHT) growth process.  
Type II



Sample Image Used



### IGI LABORATORY GROWN DIAMOND ID REPORT

February 19, 2024  
IGI Report Number **LG607300975**  
**CUT CORNERED RECTANGULAR  
MODIFIED BRILLIANT**  
**6.86 X 4.88 X 3.13 MM**  
Carat Weight 0.91 CARAT  
Color Grade E  
Clarity Grade VVS 2  
Cut Grade VERY GOOD  
Polish EXCELLENT  
Symmetry EXCELLENT  
Fluorescence NONE  
Inscription(s)  LG607300975  
Comments: As Grown - No indication of post-growth treatment. This Laboratory Grown Diamond was created by High Pressure High Temperature (HPHT) growth process. Type II



THIS DOCUMENT WAS PRODUCED WITH THE FOLLOWING SECURITY MEASURES: SPECIAL DOCUMENT PAPER, INK SCREENS, WATERMARK, BACKGROUND DESIGN, HOLOGRAM AND OTHER SECURITY FEATURES NOT LISTED AND DO EXCEED DOCUMENT SECURITY INDUSTRY GUIDELINES.

For terms & conditions and to verify this report, please visit [www.igi.org](http://www.igi.org)