



ELECTRONIC COPY

LG607307409
Report verification at igi.org



June 13, 2024

IGI Report Number **LG607307409**

Description **LABORATORY GROWN DIAMOND**

Shape and Cutting Style **PRINCESS CUT**

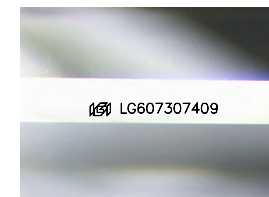
Measurements **8.91 X 8.77 X 6.04 MM**

GRADING RESULTS

Carat Weight **4.02 CARATS**

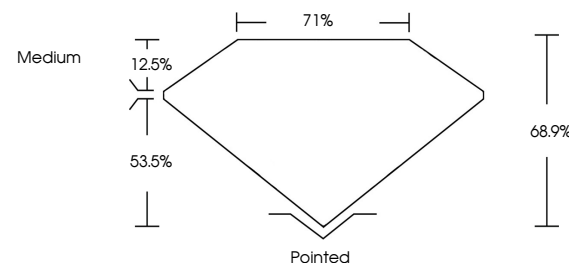
Color Grade **F**

Clarity Grade **VS 1**

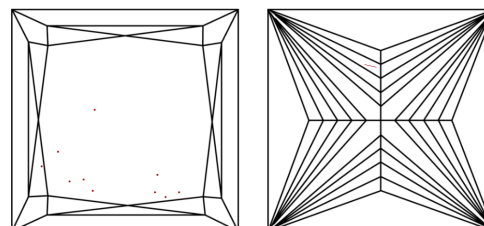


Sample Image Used

PROPORTIONS



CLARITY CHARACTERISTICS



KEY TO SYMBOLS

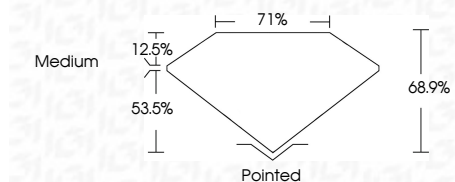
Red symbols indicate internal characteristics.
Green symbols indicate external characteristics.

COLOR

D E F G H I J Faint Very Light Light

CLARITY

IF	VS ¹⁻²	VS ¹⁻²	SI ¹⁻²	I ¹⁻³
Internally Flawless	Very Very Slightly Included	Very Slightly Included	Slightly Included	Included



ADDITIONAL GRADING INFORMATION

Polish **EXCELLENT**

Symmetry **EXCELLENT**

Fluorescence **NONE**

Inscription(s) **IGI LG607307409**

Comments: This Laboratory Grown Diamond was created by Chemical Vapor Deposition (CVD) growth process.
Type IIa



IGI



June 13, 2024
IGI Report No. LG607307409
PRINCESS CUT

4.02 CARATS
F

8.91 X 8.77 X 6.04 MM
4.02 CARATS
Color Grade
F
Clarity Grade
VS 1
Depth
68.9%
Table
71%
Girdle
Medium
Pointed
EXCELLENT
EXCELLENT
NONE
IGI LG607307409

Comments: This Laboratory Grown Diamond was created by Chemical Vapor Deposition (CVD) growth process.
Type IIa