



ELECTRONIC COPY

LG607309874

Report verification at igi.org

LABORATORY GROWN DIAMOND REPORT

November 29, 2023
 IGI Report Number **LG607309874**
 Description **LABORATORY GROWN
DIAMOND**
 Shape and Cutting Style **EMERALD CUT**
 Measurements **9.15 X 6.52 X 4.45 MM**

GRADING RESULTS

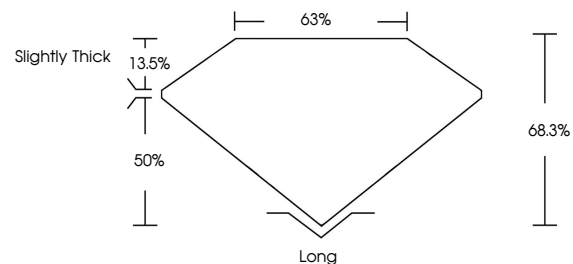
Carat Weight **2.69 CARATS**
 Color Grade **J**
 Clarity Grade **VVS 2**

ADDITIONAL GRADING INFORMATION

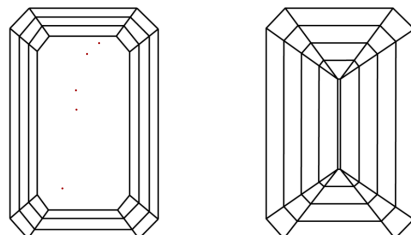
Polish **VERY GOOD**
 Symmetry **EXCELLENT**
 Fluorescence **NONE**
 Inscription(s) **IGI LG607309874**

Comments: This Laboratory Grown Diamond was created by Chemical Vapor Deposition (CVD) growth process and may include post-growth treatment. Type IIa

PROPORTIONS



CLARITY CHARACTERISTICS



KEY TO SYMBOLS

Red symbols indicate internal characteristics.
 Green symbols indicate external characteristics.

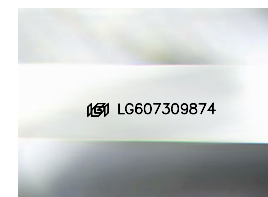
GRADING SCALES

CLARITY

IF	VVS ¹⁻²	VS ¹⁻²	SI ¹⁻²	I ¹⁻³
Internally Flawless	Very Very Slightly Included	Very Slightly Included	Slightly Included	Included

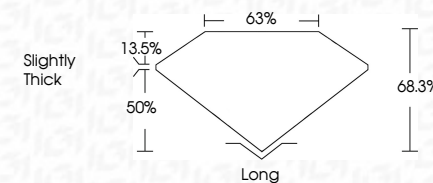
COLOR

D	E	F	G	H	I	J	Faint	Very Light	Light
---	---	---	---	---	---	---	-------	------------	-------



Sample Image Used

November 29, 2023
 IGI Report Number **LG607309874**
 Description **LABORATORY GROWN
DIAMOND**
 Shape and Cutting Style **EMERALD CUT**
 Measurements **9.15 X 6.52 X 4.45 MM**
GRADING RESULTS
 Carat Weight **2.69 CARATS**
 Color Grade **J**
 Clarity Grade **VVS 2**



ADDITIONAL GRADING INFORMATION

Polish **VERY GOOD**
 Symmetry **EXCELLENT**
 Fluorescence **NONE**
 Inscription(s) **IGI LG607309874**
 Comments: This Laboratory Grown Diamond was created by Chemical Vapor Deposition (CVD) growth process and may include post-growth treatment. Type IIa



IGI

November 29, 2023
 IGI Report No LG607309874
EMERALD CUT
 9.15 X 6.52 X 4.45 MM
 Carat Weight **2.69 CARATS**
 Color Grade **J**
 Clarity Grade **VVS 2**
 Depth **68.3%**
 Table **63%**
 Girdle **Slightly Thick**
 Culet **Long**
 Polish **VERY GOOD**
 Symmetry **EXCELLENT**
 Fluorescence **NONE**
 Inscription(s) **IGI LG607309874**

Comments: This Laboratory Grown Diamond was created by Chemical Vapor Deposition (CVD) growth process and may include post-growth treatment. Type IIa