



ELECTRONIC COPY

LABORATORY GROWN DIAMOND REPORT

November 29, 2023
IGI Report Number LG607310055
Description LABORATORY GROWN DIAMOND
Shape and Cutting Style EMERALD CUT
Measurements 8.51 X 5.85 X 3.83 MM

GRADING RESULTS

Carat Weight 2.03 CARATS
Color Grade J
Clarity Grade VS 1

ADDITIONAL GRADING INFORMATION

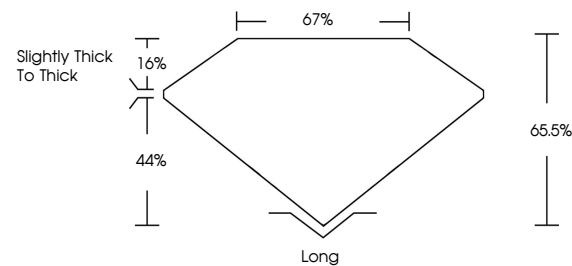
Polish VERY GOOD
Symmetry VERY GOOD
Fluorescence NONE
Inscription(s) IGI LG607310055

Comments: This Laboratory Grown Diamond was created by Chemical Vapor Deposition (CVD) growth process and may include post-growth treatment. Type IIa

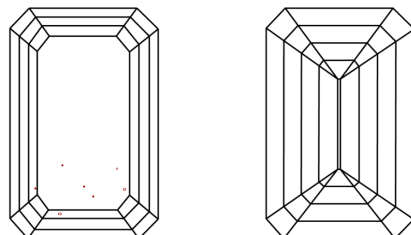
LABORATORY GROWN DIAMOND REPORT

LG607310055
Report verification at igi.org

PROPORTIONS



CLARITY CHARACTERISTICS



KEY TO SYMBOLS

Red symbols indicate internal characteristics.
Green symbols indicate external characteristics.

LABORATORY GROWN DIAMOND REPORT

GRADING SCALES

CLARITY

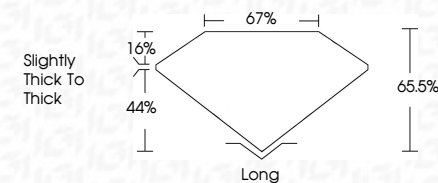
Table mapping clarity grades (IF, VVS, VS, SI, I) to internal characteristics (Internally Flawless, Very Very Slightly Included, etc.)

COLOR

Table mapping color grades (D, E, F, G, H, I, J) to color descriptions (Faint, Very Light, Light)

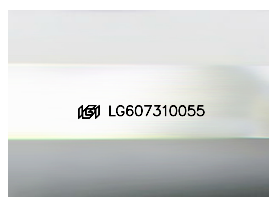
LABORATORY GROWN DIAMOND REPORT

November 29, 2023
IGI Report Number LG607310055
Description LABORATORY GROWN DIAMOND
Shape and Cutting Style EMERALD CUT
Measurements 8.51 X 5.85 X 3.83 MM
GRADING RESULTS
Carat Weight 2.03 CARATS
Color Grade J
Clarity Grade VS 1



ADDITIONAL GRADING INFORMATION

Polish VERY GOOD
Symmetry VERY GOOD
Fluorescence NONE
Inscription(s) IGI LG607310055
Comments: This Laboratory Grown Diamond was created by Chemical Vapor Deposition (CVD) growth process and may include post-growth treatment. Type IIa



Sample Image Used



IGI

November 29, 2023
IGI Report No. LG607310055
EMERALD CUT
8.51 X 5.85 X 3.83 MM
2.03 CARATS
Color Grade J
Clarity Grade VS 1
Depth 65.5%
Table 67%
Girdle Slightly thick to thick
Culet Long
Polish VERY GOOD
Symmetry VERY GOOD
Fluorescence NONE
Inscription(s) IGI LG607310055

Comments: This Laboratory Grown Diamond was created by Chemical Vapor Deposition (CVD) growth process and may include post-growth treatment. Type IIa