



ELECTRONIC COPY

LG607315413

Report verification at igi.org

LABORATORY GROWN DIAMOND REPORT

March 18, 2024
IGI Report Number **LG607315413**

Description **LABORATORY GROWN
DIAMOND**

Shape and Cutting Style **CUSHION MODIFIED BRILLIANT**

Measurements **14.67 X 11.70 X 7.64 MM**

GRADING RESULTS

Carat Weight **10.24 CARATS**

Color Grade **E**

Clarity Grade **VS 1**

ADDITIONAL GRADING INFORMATION

Polish **EXCELLENT**

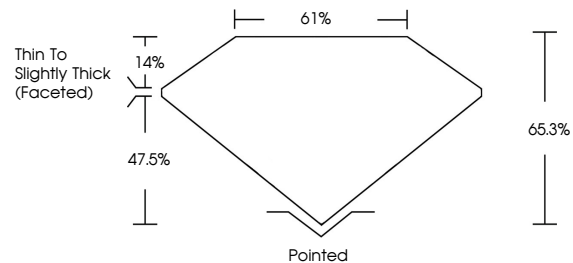
Symmetry **EXCELLENT**

Fluorescence **NONE**

Inscription(s) **IGI LG607315413**

Comments: This Laboratory Grown Diamond was created by Chemical Vapor Deposition (CVD) growth process and may include post-growth treatment. Type IIa

PROPORTIONS



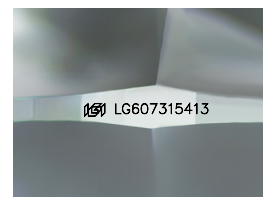
GRADING SCALES

CLARITY

IF	VVS ¹⁻²	VS ¹⁻²	SI ¹⁻²	I ¹⁻³
Internally Flawless	Very Very Slightly Included	Very Slightly Included	Slightly Included	Included

COLOR

D	E	F	G	H	I	J	Faint	Very Light	Light
---	---	---	---	---	---	---	-------	------------	-------



Sample Image Used

March 18, 2024
IGI Report Number **LG607315413**
Description **LABORATORY GROWN
DIAMOND**

Shape and Cutting Style **CUSHION MODIFIED
BRILLIANT**

Measurements **14.67 X 11.70 X 7.64 MM**

GRADING RESULTS

Carat Weight **10.24 CARATS**

Color Grade **E**

Clarity Grade **VS 1**

ADDITIONAL GRADING INFORMATION

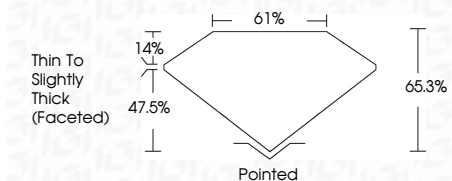
Polish **EXCELLENT**

Symmetry **EXCELLENT**

Fluorescence **NONE**

Inscription(s) **IGI LG607315413**

Comments: This Laboratory Grown Diamond was created by Chemical Vapor Deposition (CVD) growth process and may include post-growth treatment. Type IIa



IGI

March 18, 2024
IGI Report No **LG607315413**
CUSHION MODIFIED BRILLIANT
14.67 X 11.70 X 7.64 MM
Carat Weight **10.24 CARATS**
Color Grade **E**
Clarity Grade **VS 1**
Depth **65.3%**
Table **61%**
Girdle **Thin To Slightly Thick (Faceted)**
Culet **Pointed**
Polish **EXCELLENT**
Symmetry **EXCELLENT**
Fluorescence **NONE**
Inscription(s) **IGI LG607315413**
Comments: This Laboratory Grown Diamond was created by Chemical Vapor Deposition (CVD) growth process and may include post-growth treatment. Type IIa