



ELECTRONIC COPY

LABORATORY GROWN DIAMOND REPORT

LG607338541

Report verification at igi.org

**LABORATORY GROWN
DIAMOND REPORT**

LABORATORY GROWN DIAMOND REPORT

LABORATORY GROWN DIAMOND REPORT

December 1, 2023
IGI Report Number **LG607338541**
Description **LABORATORY GROWN
DIAMOND**
Shape and Cutting Style **MARQUISE BRILLIANT**
Measurements **18.01 X 9.26 X 5.73 MM**

GRADING RESULTS

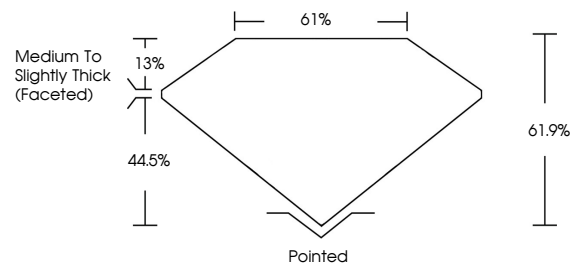
Carat Weight **5.41 CARATS**
Color Grade **F**
Clarity Grade **VS 1**

ADDITIONAL GRADING INFORMATION

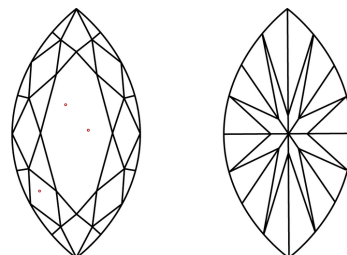
Polish **EXCELLENT**
Symmetry **EXCELLENT**
Fluorescence **NONE**
Inscription(s) **IGI LG607338541**

Comments: This Laboratory Grown Diamond was created by Chemical Vapor Deposition (CVD) growth process and may include post-growth treatment. Type IIa

PROPORTIONS



CLARITY CHARACTERISTICS



KEY TO SYMBOLS

Red symbols indicate internal characteristics.
Green symbols indicate external characteristics.

GRADING SCALES

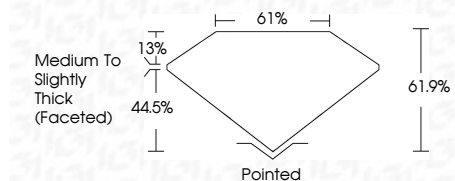
CLARITY

IF	VVS ¹⁻²	VS ¹⁻²	SI ¹⁻²	I ¹⁻³
Internally Flawless	Very Very Slightly Included	Very Slightly Included	Slightly Included	Included

COLOR

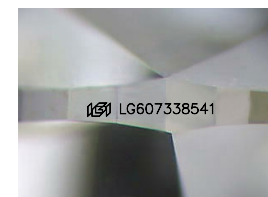
D	E	F	G	H	I	J	Faint	Very Light	Light
---	---	---	---	---	---	---	-------	------------	-------

December 1, 2023
IGI Report Number **LG607338541**
Description **LABORATORY GROWN
DIAMOND**
Shape and Cutting Style **MARQUISE BRILLIANT**
Measurements **18.01 X 9.26 X 5.73 MM**
GRADING RESULTS
Carat Weight **5.41 CARATS**
Color Grade **F**
Clarity Grade **VS 1**



ADDITIONAL GRADING INFORMATION

Polish **EXCELLENT**
Symmetry **EXCELLENT**
Fluorescence **NONE**
Inscription(s) **IGI LG607338541**
Comments: This Laboratory Grown Diamond was created by Chemical Vapor Deposition (CVD) growth process and may include post-growth treatment. Type IIa



Sample Image Used



IGI

December 1, 2023
IGI Report No LG607338541
MARQUISE BRILLIANT
18.01 X 9.26 X 5.73 MM
5.41 CARATS
F
VS 1
61.9%
61%
Medium to Slightly Thick (Faceted)
Pointed
EXCELLENT
EXCELLENT
NONE
IGI LG607338541
Comments: This Laboratory Grown Diamond was created by Chemical Vapor Deposition (CVD) growth process and may include post-growth treatment. Type IIa