



INTERNATIONAL GEMOLOGICAL INSTITUTE

ELECTRONIC COPY

LABORATORY GROWN DIAMOND REPORT

LG607345999


IGI LABORATORY GROWN DIAMOND ID REPORT

November 8, 2023

IGI Report Number **LG607345999**

**CUT CORNERED RECTANGULAR
MODIFIED BRILLIANT**

5.24 X 3.47 X 2.50 MM

Carat Weight	0.38 CARAT
Color Grade	G
Clarity Grade	VS 2
Polish	VERY GOOD
Symmetry	VERY GOOD
Fluorescence	NONE
Inscription(s)	 LG607345999

Comments: This Laboratory Grown Diamond was created by Chemical Vapor Deposition (CVD) growth process and may include post-growth treatment. Type Ila

LABORATORY GROWN DIAMOND REPORT

IGI LABORATORY GROWN DIAMOND IDENTIFICATION REPORT

November 8, 2023

IGI Report Number

LG607345999

Description **LABORATORY GROWN DIAMOND**

Shape and Cutting Style **CUT CORNERED RECTANGULAR MODIFIED
BRILLIANT**

Measurements **5.24 X 3.47 X 2.50 MM**

GRADING RESULTS

Carat Weight **0.38 CARAT**

Color Grade **G**

Clarity Grade **VS 2**

ADDITIONAL GRADING INFORMATION

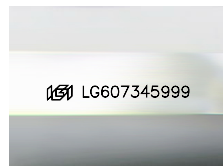
Polish **VERY GOOD**

Symmetry **VERY GOOD**

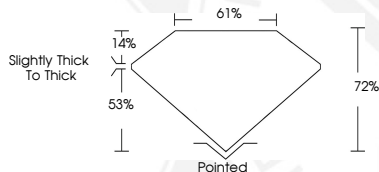
Fluorescence **NONE**

Inscription(s)  **LG607345999**

Comments: This Laboratory Grown Diamond was created by Chemical Vapor Deposition (CVD) growth process and may include post-growth treatment.
Type Ila



Sample Image Used




IGI LABORATORY GROWN DIAMOND ID REPORT

November 8, 2023

IGI Report Number **LG607345999**

**CUT CORNERED RECTANGULAR
MODIFIED BRILLIANT**

5.24 X 3.47 X 2.50 MM

Carat Weight	0.38 CARAT
Color Grade	G
Clarity Grade	VS 2
Polish	VERY GOOD
Symmetry	VERY GOOD
Fluorescence	NONE
Inscription(s)	 LG607345999

Comments: This Laboratory Grown Diamond was created by Chemical Vapor Deposition (CVD) growth process and may include post-growth treatment. Type Ila



THIS DOCUMENT WAS PRODUCED WITH THE FOLLOWING SECURITY MEASURES: SPECIAL DOCUMENT PAPER, INK SCREENS, WATERMARK, BACKGROUND DESIGN, HOLOGRAM AND OTHER SECURITY FEATURES NOT LISTED AND DO EXCEED DOCUMENT SECURITY INDUSTRY GUIDELINES.

For terms & conditions and to verify this report, please visit www.igi.org