



ELECTRONIC COPY

LABORATORY GROWN DIAMOND REPORT

LG607348201

Report verification at igi.org

**LABORATORY GROWN
DIAMOND REPORT**

LABORATORY GROWN DIAMOND REPORT

LABORATORY GROWN DIAMOND REPORT

December 19, 2023
IGI Report Number **LG607348201**
Description **LABORATORY GROWN
DIAMOND**
Shape and Cutting Style **CUSHION MODIFIED BRILLIANT**
Measurements **7.71 X 6.19 X 4.13 MM**

GRADING RESULTS

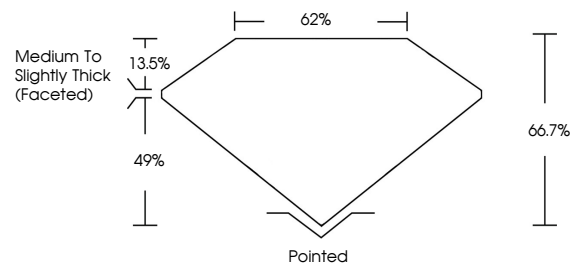
Carat Weight **1.51 CARAT**
Color Grade **H**
Clarity Grade **SI 2**
Cut Grade **VERY GOOD**

ADDITIONAL GRADING INFORMATION

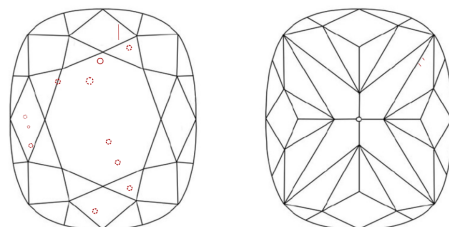
Polish **EXCELLENT**
Symmetry **VERY GOOD**
Fluorescence **NONE**
Inscription(s) **LG607348201**

Comments: This Laboratory Grown Diamond was created by Chemical Vapor Deposition (CVD) growth process.
Type IIa.Indications of post-growth treatment.

PROPORTIONS



CLARITY CHARACTERISTICS



KEY TO SYMBOLS

Red symbols indicate internal characteristics.
Green symbols indicate external characteristics.

GRADING SCALES

CLARITY

IF	VVS ¹⁻²	VS ¹⁻²	SI ¹⁻²	I ¹⁻³
Internally Flawless	Very Very Slightly Included	Very Slightly Included	Slightly Included	Included

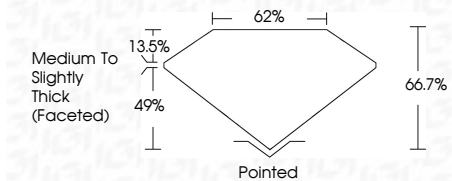
COLOR

D	E	F	G	H	I	J	Faint	Very Light	Light

December 19, 2023
IGI Report Number **LG607348201**
Description **LABORATORY GROWN
DIAMOND**
Shape and Cutting Style **CUSHION MODIFIED
BRILLIANT**
Measurements **7.71 X 6.19 X 4.13 MM**

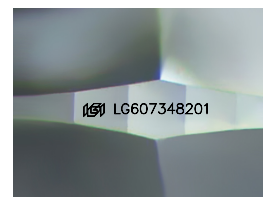
GRADING RESULTS

Carat Weight **1.51 CARAT**
Color Grade **H**
Clarity Grade **SI 2**
Cut Grade **VERY GOOD**



ADDITIONAL GRADING INFORMATION

Polish **EXCELLENT**
Symmetry **VERY GOOD**
Fluorescence **NONE**
Inscription(s) **LG607348201**
Comments: This Laboratory Grown Diamond was created by Chemical Vapor Deposition (CVD) growth process.
Type IIa.Indications of post-growth treatment.



Sample Image Used



IGI

December 19, 2023
IGI Report No **LG607348201**
CUSHION MODIFIED BRILLIANT
7.71 X 6.19 X 4.13 MM
1.51 CARAT
H
SI 2
VERY GOOD
66.7%
62%
Medium To Slightly Thick (Faceted)
Pointed
EXCELLENT
VERY GOOD
NONE
NONE
 LG607348201
Comments: This Laboratory Grown Diamond was created by Chemical Vapor Deposition (CVD) growth process.
Type IIa.Indications of post-growth treatment.