



ELECTRONIC COPY

LABORATORY GROWN DIAMOND REPORT

November 2, 2023	
IGI Report Number	LG607371656
Description	LABORATORY GROWN DIAMOND
Shape and Cutting Style	ROUND BRILLIANT
Measurements	6.95 - 6.98 X 4.28 MM

GRADING RESULTS

Carat Weight	1.26 CARAT
Color Grade	G
Clarity Grade	VS 2
Cut Grade	IDEAL

ADDITIONAL GRADING INFORMATION

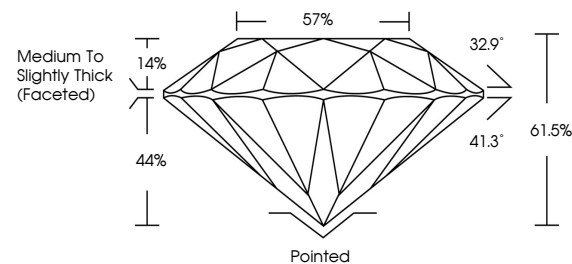
Polish	EXCELLENT
Symmetry	EXCELLENT
Fluorescence	NONE
Inscription(s)	LG607371656

Comments: As Grown - No indication of post-growth treatment.
This Laboratory Grown Diamond was created by High Pressure High Temperature (HPHT) growth process.
Type II

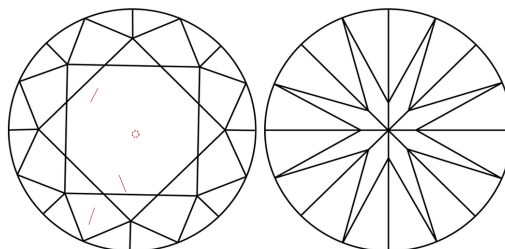
LABORATORY GROWN DIAMOND REPORT

LG607371656
Report verification at igi.org

PROPORTIONS



CLARITY CHARACTERISTICS



KEY TO SYMBOLS

Red symbols indicate internal characteristics.
Green symbols indicate external characteristics.

LABORATORY GROWN
DIAMOND REPORT

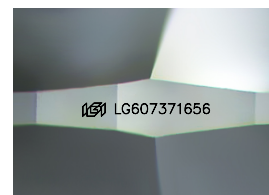
GRADING SCALES

CLARITY

IF	VVS ¹⁻²	VS ¹⁻²	SI ¹⁻²	I ¹⁻³
Internally Flawless	Very Very Slightly Included	Very Slightly Included	Slightly Included	Included

COLOR

D E F G H I J Faint Very Light Light



Sample Image Used



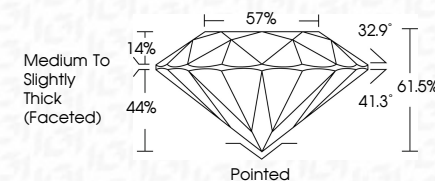
© IGI 2020, International Gemological Institute

FD - 10 20

LABORATORY GROWN DIAMOND REPORT

November 2, 2023	
IGI Report Number	LG607371656
Description	LABORATORY GROWN DIAMOND
Shape and Cutting Style	ROUND BRILLIANT
Measurements	6.95 - 6.98 X 4.28 MM

Carat Weight	1.26 CARAT
Color Grade	G
Clarity Grade	VS 2
Cut Grade	IDEAL



ADDITIONAL GRADING INFORMATION

Polish	EXCELLENT
Symmetry	EXCELLENT
Fluorescence	NONE
Inscription(s)	LG LG607371656
Comments: As Grown - No indication of post-growth treatment.	
This Laboratory Grown Diamond was created by High Pressure High Temperature (HPHT) growth process.	
Type II	



IG

November 2, 2023	GI Report No LG607371656	1.26 CARAT
ROUND BRILLIANT	VS 2	EXCELLENT
95.95 - 4.98 X 4.28 MM	IDEAL	EXCELLENT
Color Grade	61.5%	NONE
Carat Weight	57%	1691 LG607371656
Clarity Grade	Medium to Slightly Thick (Faceted)	
Cut Grade		
Depth		
Table		
Girdle		
Culet		
Polish		
Symmetry		
Fluorescence		
Inscriptions(s)		
Comments:		
<p>None - No indication of post-growth treatment.</p> <p>This Laboratory Growth Diamond was created by High Pressure High Temperature (HPHT) growth process.</p> <p>Type II</p>		