



ELECTRONIC COPY

LABORATORY GROWN DIAMOND REPORT

LG607378185

Report verification at igi.org

LABORATORY GROWN
DIAMOND REPORT

LABORATORY GROWN DIAMOND REPORT

LABORATORY GROWN DIAMOND REPORT

November 3, 2023
IGI Report Number **LG607378185**
Description **LABORATORY GROWN
DIAMOND**
Shape and Cutting Style **EMERALD CUT**
Measurements **6.82 X 4.67 X 3.24 MM**

GRADING RESULTS

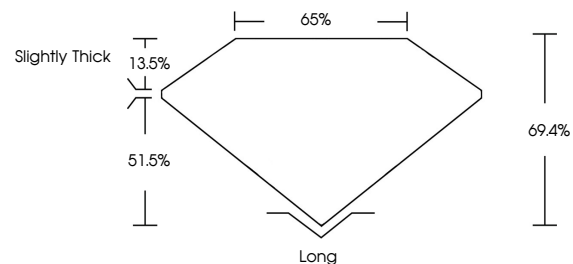
Carat Weight **1.02 CARAT**
Color Grade **G**
Clarity Grade **VVS 2**

ADDITIONAL GRADING INFORMATION

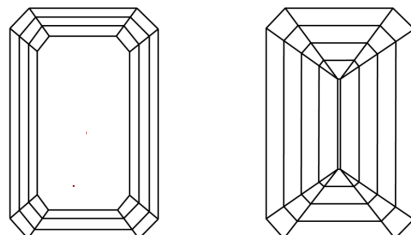
Polish **EXCELLENT**
Symmetry **EXCELLENT**
Fluorescence **NONE**
Inscription(s) **IGI LG607378185**

Comments: This Laboratory Grown Diamond was created by Chemical Vapor Deposition (CVD) growth process and may include post-growth treatment. Type IIa

PROPORTIONS



CLARITY CHARACTERISTICS



KEY TO SYMBOLS

Red symbols indicate internal characteristics.
Green symbols indicate external characteristics.

GRADING SCALES

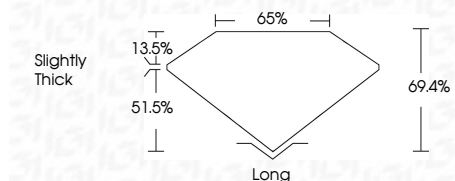
CLARITY

IF	VVS ¹⁻²	VS ¹⁻²	SI ¹⁻²	I ¹⁻³
Internally Flawless	Very Very Slightly Included	Very Slightly Included	Slightly Included	Included

COLOR

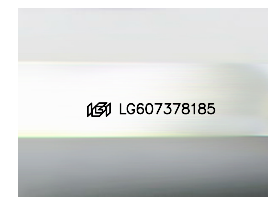
D	E	F	G	H	I	J	Faint	Very Light	Light
---	---	---	---	---	---	---	-------	------------	-------

November 3, 2023
IGI Report Number **LG607378185**
Description **LABORATORY GROWN
DIAMOND**
Shape and Cutting Style **EMERALD CUT**
Measurements **6.82 X 4.67 X 3.24 MM**
GRADING RESULTS
Carat Weight **1.02 CARAT**
Color Grade **G**
Clarity Grade **VVS 2**



ADDITIONAL GRADING INFORMATION

Polish **EXCELLENT**
Symmetry **EXCELLENT**
Fluorescence **NONE**
Inscription(s) **IGI LG607378185**
Comments: This Laboratory Grown Diamond was created by Chemical Vapor Deposition (CVD) growth process and may include post-growth treatment. Type IIa



Sample Image Used



IGI

November 3, 2023
IGI Report No LG607378185
EMERALD CUT
6.82 X 4.67 X 3.24 MM
Carat Weight **1.02 CARAT**
Color Grade **G**
Clarity Grade **VVS 2**
Depth **69.4%**
Table **65%**
Girdle **Slightly Thick**
Culet **Long**
Polish **EXCELLENT**
Symmetry **EXCELLENT**
Fluorescence **NONE**
Inscription(s) **IGI LG607378185**

Comments: This Laboratory Grown Diamond was created by Chemical Vapor Deposition (CVD) growth process and may include post-growth treatment. Type IIa