



**INTERNATIONAL  
GEMOLOGICAL  
INSTITUTE**

**ELECTRONIC COPY**

**LABORATORY GROWN  
DIAMOND REPORT**

**LG607386685**

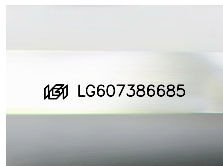
**IGI LABORATORY GROWN  
DIAMOND ID REPORT**

January 12, 2024  
IGI Report Number **LG607386685**  
**CUT CORNERED RECTANGULAR  
MODIFIED BRILLIANT**  
**6.53 X 4.41 X 2.79 MM**  
Carat Weight 0.71 CARAT  
Color Grade E  
Clarity Grade VS 2  
Polish EXCELLENT  
Symmetry VERY GOOD  
Fluorescence NONE  
Inscription(s) LG607386685

**LABORATORY GROWN DIAMOND REPORT**

**IGI LABORATORY GROWN DIAMOND IDENTIFICATION REPORT**

January 12, 2024  
IGI Report Number LG607386685  
Description LABORATORY GROWN DIAMOND  
Shape and Cutting Style CUT CORNERED RECTANGULAR MODIFIED  
BRILLIANT  
Measurements 6.53 X 4.41 X 2.79 MM



Sample Image Used

Comments: This Laboratory Grown Diamond was created by Chemical Vapor Deposition (CVD) growth process and may include post-growth treatment. Type Ila

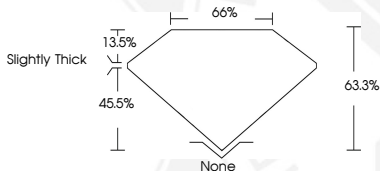
**GRADING RESULTS**

Carat Weight 0.71 CARAT  
Color Grade E  
Clarity Grade VS 2

**ADDITIONAL GRADING INFORMATION**

Polish EXCELLENT  
Symmetry VERY GOOD  
Fluorescence NONE  
Inscription(s) LG607386685

Comments: This Laboratory Grown Diamond was created by Chemical Vapor Deposition (CVD) growth process and may include post-growth treatment.  
Type Ila



**IGI LABORATORY GROWN  
DIAMOND ID REPORT**

January 12, 2024  
IGI Report Number **LG607386685**  
**CUT CORNERED RECTANGULAR  
MODIFIED BRILLIANT**  
**6.53 X 4.41 X 2.79 MM**  
Carat Weight 0.71 CARAT  
Color Grade E  
Clarity Grade VS 2  
Polish EXCELLENT  
Symmetry VERY GOOD  
Fluorescence NONE  
Inscription(s) LG607386685

Comments: This Laboratory Grown Diamond was created by Chemical Vapor Deposition (CVD) growth process and may include post-growth treatment. Type Ila



THIS DOCUMENT WAS PRODUCED WITH THE FOLLOWING SECURITY MEASURES: SPECIAL DOCUMENT PAPER, INK SCREENS, WATERMARK, BACKGROUND DESIGN, HOLOGRAM AND OTHER SECURITY FEATURES NOT LISTED AND DO EXCEED DOCUMENT SECURITY INDUSTRY GUIDELINES.

For terms & conditions and to verify this report, please visit [www.igi.org](http://www.igi.org)