



# INTERNATIONAL GEMOLOGICAL INSTITUTE

ELECTRONIC COPY

## LABORATORY GROWN DIAMOND REPORT

LG607397057


### IGI LABORATORY GROWN DIAMOND ID REPORT

November 28, 2023

IGI Report Number **LG607397057**

**CUT CORNERED RECTANGULAR  
MODIFIED BRILLIANT**

**5.65 X 3.86 X 2.70 MM**

Carat Weight 0.50 CARAT  
Color Grade G  
Clarity Grade VS 1  
Polish VERY GOOD  
Symmetry VERY GOOD  
Fluorescence NONE  
Inscription(s)  LG607397057

Comments: This Laboratory Grown Diamond was created by Chemical Vapor Deposition (CVD) growth process and may include post-growth treatment. Type Ila

## LABORATORY GROWN DIAMOND REPORT

### IGI LABORATORY GROWN DIAMOND IDENTIFICATION REPORT

November 28, 2023

IGI Report Number LG607397057

Description LABORATORY GROWN DIAMOND

Shape and Cutting Style CUT CORNERED RECTANGULAR MODIFIED  
BRILLIANT

Measurements 5.65 X 3.86 X 2.70 MM

### GRADING RESULTS

Carat Weight 0.50 CARAT

Color Grade G

Clarity Grade VS 1

### ADDITIONAL GRADING INFORMATION

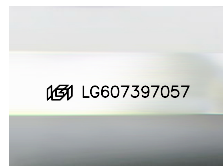
Polish VERY GOOD

Symmetry VERY GOOD

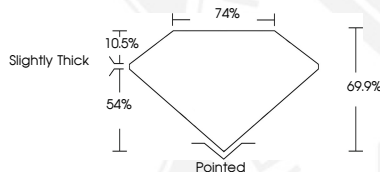
Fluorescence NONE

Inscription(s)  LG607397057

Comments: This Laboratory Grown Diamond was created by Chemical Vapor Deposition (CVD) growth process and may include post-growth treatment.  
Type Ila



Sample Image Used




### IGI LABORATORY GROWN DIAMOND ID REPORT

November 28, 2023

IGI Report Number **LG607397057**

**CUT CORNERED RECTANGULAR  
MODIFIED BRILLIANT**

**5.65 X 3.86 X 2.70 MM**

Carat Weight 0.50 CARAT  
Color Grade G  
Clarity Grade VS 1  
Polish VERY GOOD  
Symmetry VERY GOOD  
Fluorescence NONE  
Inscription(s)  LG607397057

Comments: This Laboratory Grown Diamond was created by Chemical Vapor Deposition (CVD) growth process and may include post-growth treatment. Type Ila



THIS DOCUMENT WAS PRODUCED WITH THE FOLLOWING SECURITY MEASURES: SPECIAL DOCUMENT PAPER, INK SCREENS, WATERMARK, BACKGROUND DESIGN, HOLOGRAM AND OTHER SECURITY FEATURES NOT LISTED AND DO EXCEED DOCUMENT SECURITY INDUSTRY GUIDELINES.

For terms & conditions and to verify this report, please visit [www.igi.org](http://www.igi.org)