



**INTERNATIONAL  
GEMOLOGICAL  
INSTITUTE**

**ELECTRONIC COPY**

**LABORATORY GROWN  
DIAMOND REPORT**

**LG607398309**

**IGI LABORATORY GROWN  
DIAMOND ID REPORT**

November 7, 2023

IGI Report Number **LG607398309**

**CUT CORNERED RECTANGULAR  
MODIFIED BRILLIANT**

**6.79 X 4.66 X 3.18 MM**

|                |             |
|----------------|-------------|
| Carat Weight   | 0.91 CARAT  |
| Color Grade    | F           |
| Clarity Grade  | VVS 2       |
| Polish         | EXCELLENT   |
| Symmetry       | EXCELLENT   |
| Fluorescence   | NONE        |
| Inscription(s) | LG607398309 |

Comments: This Laboratory Grown Diamond was created by Chemical Vapor Deposition (CVD) growth process and may include post-growth treatment. Type Ila

**LABORATORY GROWN DIAMOND REPORT**

**IGI LABORATORY GROWN DIAMOND IDENTIFICATION REPORT**

November 7, 2023

IGI Report Number **LG607398309**

Description **LABORATORY GROWN DIAMOND**

Shape and Cutting Style **CUT CORNERED RECTANGULAR MODIFIED  
BRILLIANT**

Measurements **6.79 X 4.66 X 3.18 MM**

**GRADING RESULTS**

Carat Weight **0.91 CARAT**

Color Grade **F**

Clarity Grade **VVS 2**

**ADDITIONAL GRADING INFORMATION**

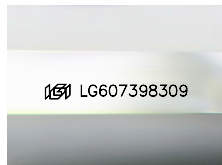
Polish **EXCELLENT**

Symmetry **EXCELLENT**

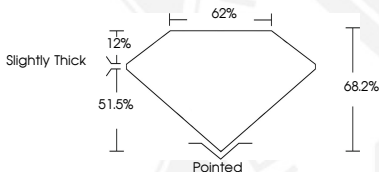
Fluorescence **NONE**

Inscription(s) **LG607398309**

Comments: This Laboratory Grown Diamond was created by Chemical Vapor Deposition (CVD) growth process and may include post-growth treatment. Type Ila



Sample Image Used



**IGI LABORATORY GROWN  
DIAMOND ID REPORT**

November 7, 2023

IGI Report Number **LG607398309**

**CUT CORNERED RECTANGULAR  
MODIFIED BRILLIANT**

**6.79 X 4.66 X 3.18 MM**

|                |             |
|----------------|-------------|
| Carat Weight   | 0.91 CARAT  |
| Color Grade    | F           |
| Clarity Grade  | VVS 2       |
| Polish         | EXCELLENT   |
| Symmetry       | EXCELLENT   |
| Fluorescence   | NONE        |
| Inscription(s) | LG607398309 |

Comments: This Laboratory Grown Diamond was created by Chemical Vapor Deposition (CVD) growth process and may include post-growth treatment. Type Ila

THIS DOCUMENT WAS PRODUCED WITH THE FOLLOWING SECURITY MEASURES: SPECIAL DOCUMENT PAPER, INK SCREENS, WATERMARK, BACKGROUND DESIGN, HOLOGRAM AND OTHER SECURITY FEATURES NOT LISTED AND DO EXCEED DOCUMENT SECURITY INDUSTRY GUIDELINES.

For terms & conditions and to verify this report, please visit [www.igi.org](http://www.igi.org)