



**ELECTRONIC COPY**

**LABORATORY GROWN DIAMOND REPORT**

LG608366188

Report verification at [igi.org](http://igi.org)

**LABORATORY GROWN  
DIAMOND REPORT**

**LABORATORY GROWN DIAMOND REPORT**

**LABORATORY GROWN DIAMOND REPORT**

December 4, 2023  
 IGI Report Number **LG608366188**  
 Description **LABORATORY GROWN  
DIAMOND**  
 Shape and Cutting Style **ROUND BRILLIANT**  
 Measurements **11.35 - 11.40 X 6.92 MM**

**GRADING RESULTS**

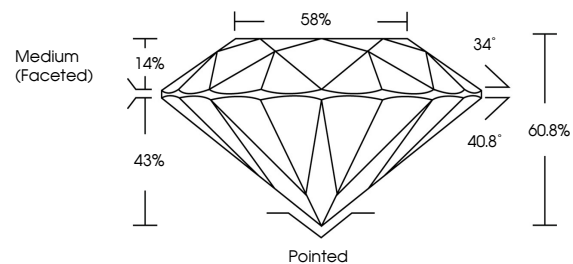
Carat Weight **5.51 CARATS**  
 Color Grade **F**  
 Clarity Grade **VS 2**  
 Cut Grade **IDEAL**

**ADDITIONAL GRADING INFORMATION**

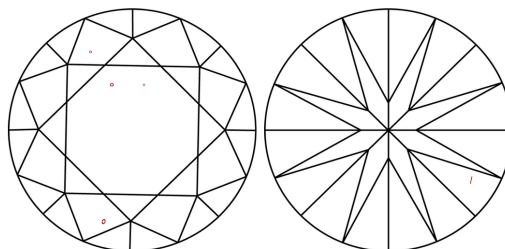
Polish **EXCELLENT**  
 Symmetry **EXCELLENT**  
 Fluorescence **NONE**  
 Inscription(s) **IGI LG608366188**

Comments: HEARTS & ARROWS  
 This Laboratory Grown Diamond was created by  
 Chemical Vapor Deposition (CVD) growth process and  
 may include post-growth treatment.  
 Type IIa

**PROPORTIONS**



**CLARITY CHARACTERISTICS**



**KEY TO SYMBOLS**

Red symbols indicate internal characteristics.  
 Green symbols indicate external characteristics.



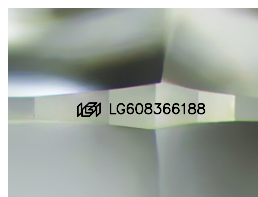
**GRADING SCALES**

**CLARITY**

| IF                     | VVS <sup>1-2</sup>             | VS <sup>1-2</sup>         | SI <sup>1-2</sup>    | I <sup>1-3</sup> |
|------------------------|--------------------------------|---------------------------|----------------------|------------------|
| Internally<br>Flawless | Very Very<br>Slightly Included | Very<br>Slightly Included | Slightly<br>Included | Included         |

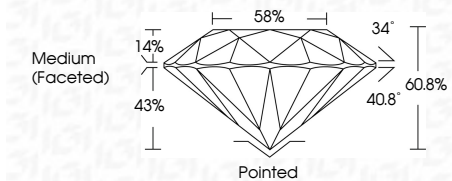
**COLOR**

| D | E | F | G | H | I | J | Faint | Very Light | Light |
|---|---|---|---|---|---|---|-------|------------|-------|
|---|---|---|---|---|---|---|-------|------------|-------|



Sample Image Used

December 4, 2023  
 IGI Report Number **LG608366188**  
 Description **LABORATORY GROWN  
DIAMOND**  
 Shape and Cutting Style **ROUND BRILLIANT**  
 Measurements **11.35 - 11.40 X 6.92 MM**  
**GRADING RESULTS**  
 Carat Weight **5.51 CARATS**  
 Color Grade **F**  
 Clarity Grade **VS 2**  
 Cut Grade **IDEAL**



**ADDITIONAL GRADING INFORMATION**

Polish **EXCELLENT**  
 Symmetry **EXCELLENT**  
 Fluorescence **NONE**  
 Inscription(s) **IGI LG608366188**  
 Comments: HEARTS & ARROWS  
 This Laboratory Grown Diamond was created by  
 Chemical Vapor Deposition (CVD) growth process and  
 may include post-growth treatment.  
 Type IIa



|                  |                           |                 |             |       |       |        |       |        |                  |              |                 |   |      |                 |
|------------------|---------------------------|-----------------|-------------|-------|-------|--------|-------|--------|------------------|--------------|-----------------|---|------|-----------------|
| December 4, 2023 | IGI Report No LG608366188 | ROUND BRILLIANT | 5.51 CARATS | F     | VS 2  | IDEAL  | 60.8% | 58%    | Medium (Faceted) | Pointed      | EXCELLENT       | EXCELLENT   | NONE | IGI LG608366188 |
| Carat Weight     | Color Grade               | Clarity Grade   | Cut Grade   | Depth | Table | Girdle | Culet | Polish | Symmetry         | Fluorescence | Inscriptions(s) | Comments:<br>Hearts & Arrows<br>This Laboratory Grown Diamond was<br>created by Chemical Vapor Deposition<br>(CVD) growth process and may include<br>post-growth treatment.<br>Type IIa |      |                 |