



**INTERNATIONAL  
GEMOLOGICAL  
INSTITUTE**

**ELECTRONIC COPY**

**LABORATORY GROWN  
DIAMOND REPORT**

**LG608366773**

**IGI LABORATORY GROWN  
DIAMOND ID REPORT**

December 13, 2023

IGI Report Number **LG608366773**

**ROUND BRILLIANT**

**5.66 - 5.73 X 3.35 MM**

Carat Weight	0.69 CARAT
Color Grade	F
Clarity Grade	VS 1
Cut Grade	GOOD
Polish	VERY GOOD
Symmetry	GOOD
Fluorescence	NONE
Inscription(s)	LG608366773

Comments: As Grown - No indication of post-growth treatment. This Laboratory Grown Diamond was created by High Pressure High Temperature (HPHT) growth process. Type II

**LABORATORY GROWN DIAMOND REPORT**

**IGI LABORATORY GROWN DIAMOND IDENTIFICATION REPORT**

December 13, 2023

IGI Report Number **LG608366773**

Description **LABORATORY GROWN DIAMOND**

Shape and Cutting Style **ROUND BRILLIANT**

Measurements **5.66 - 5.73 X 3.35 MM**

**GRADING RESULTS**

Carat Weight **0.69 CARAT**

Color Grade **F**

Clarity Grade **VS 1**

Cut Grade **GOOD**

**ADDITIONAL GRADING INFORMATION**

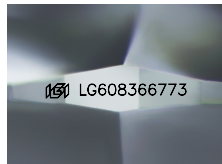
Polish **VERY GOOD**

Symmetry **GOOD**

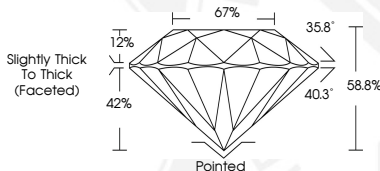
Fluorescence **NONE**

Inscription(s) **LG608366773**

Comments: As Grown - No indication of post-growth treatment. This Laboratory Grown Diamond was created by High Pressure High Temperature (HPHT) growth process. Type II



Sample Image Used



**IGI LABORATORY GROWN  
DIAMOND ID REPORT**

December 13, 2023

IGI Report Number **LG608366773**

**ROUND BRILLIANT**

**5.66 - 5.73 X 3.35 MM**

Carat Weight	0.69 CARAT
Color Grade	F
Clarity Grade	VS 1
Cut Grade	GOOD
Polish	VERY GOOD
Symmetry	GOOD
Fluorescence	NONE
Inscription(s)	LG608366773

Comments: As Grown - No indication of post-growth treatment. This Laboratory Grown Diamond was created by High Pressure High Temperature (HPHT) growth process. Type II

THIS DOCUMENT WAS PRODUCED WITH THE FOLLOWING SECURITY MEASURES: SPECIAL DOCUMENT PAPER, INK SCREENS, WATERMARK, BACKGROUND DESIGN, HOLOGRAM AND OTHER SECURITY FEATURES NOT LISTED AND DO EXCEED DOCUMENT SECURITY INDUSTRY GUIDELINES.

For terms & conditions and to verify this report, please visit [www.igi.org](http://www.igi.org)