



**ELECTRONIC COPY**

LG608394449

Report verification at [igi.org](http://igi.org)

**LABORATORY GROWN DIAMOND REPORT**

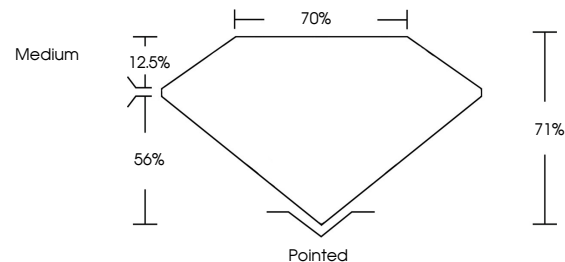
November 28, 2023  
 IGI Report Number **LG608394449**  
 Description **LABORATORY GROWN  
DIAMOND**  
 Shape and Cutting Style **PRINCESS CUT**  
 Measurements **9.77 X 9.76 X 6.93 MM**  
**GRADING RESULTS**  
 Carat Weight **5.56 CARATS**  
 Color Grade **H**  
 Clarity Grade **VVS 2**

**ADDITIONAL GRADING INFORMATION**

Polish **EXCELLENT**  
 Symmetry **EXCELLENT**  
 Fluorescence **NONE**  
 Inscription(s)  **LG608394449**

Comments: This Laboratory Grown Diamond was created by Chemical Vapor Deposition (CVD) growth process and may include post-growth treatment. Type IIa

**PROPORTIONS**



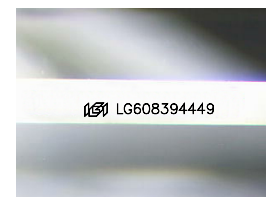
**GRADING SCALES**

**CLARITY**

IF	VVS <sup>1-2</sup>	VS <sup>1-2</sup>	SI <sup>1-2</sup>	I <sup>1-3</sup>
Internally Flawless	Very Very Slightly Included	Very Slightly Included	Slightly Included	Included

**COLOR**

D	E	F	G	H	I	J	Faint	Very Light	Light
---	---	---	---	---	---	---	-------	------------	-------

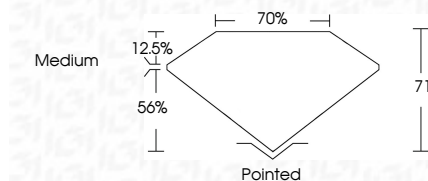


Sample Image Used

November 28, 2023  
 IGI Report Number **LG608394449**  
 Description **LABORATORY GROWN  
DIAMOND**  
 Shape and Cutting Style **PRINCESS CUT**  
 Measurements **9.77 X 9.76 X 6.93 MM**  
**GRADING RESULTS**  
 Carat Weight **5.56 CARATS**  
 Color Grade **H**  
 Clarity Grade **VVS 2**

**ADDITIONAL GRADING INFORMATION**

Polish **EXCELLENT**  
 Symmetry **EXCELLENT**  
 Fluorescence **NONE**  
 Inscription(s)  **LG608394449**  
 Comments: This Laboratory Grown Diamond was created by Chemical Vapor Deposition (CVD) growth process and may include post-growth treatment. Type IIa



**IGI**

November 28, 2023  
 IGI Report No **LG608394449**  
**PRINCESS CUT**  
**5.56 CARATS**  
 Carat Weight **H**  
 Color Grade **VVS 2**  
 Clarity Grade **71%**  
 Depth **70%**  
 Table **Medium**  
 Girdle  
 Culet  
 Polish **Pointed**  
 Symmetry **EXCELLENT**  
 Fluorescence **EXCELLENT**  
 Inscription(s) **NONE**  
 **LG608394449**

Comments: This Laboratory Grown Diamond was created by Chemical Vapor Deposition (CVD) growth process and may include post-growth treatment. Type IIa