



**ELECTRONIC COPY**

## LABORATORY GROWN DIAMOND REPORT

November 24, 2023	
IGI Report Number	LG608395406
Description	LABORATORY GROWN DIAMOND
Shape and Cutting Style	ROUND BRILLIANT
Measurements	7.14 - 7.16 X 4.33 MM

## GRADING RESULTS

Carat Weight	1.38 CARAT
Color Grade	D
Clarity Grade	VVS 1
Cut Grade	IDEAL

### ADDITIONAL GRADING INFORMATION

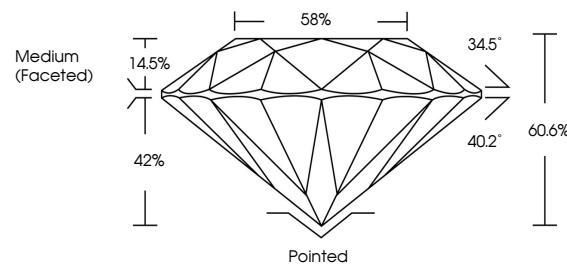
Polish	EXCELLENT
Symmetry	EXCELLENT
Fluorescence	NONE
Inscription(s)	15 LG608395406

Comments: As Grown - No indication of post-growth treatment.  
This Laboratory Grown Diamond was created by High Pressure High Temperature (HPHT) growth process.  
Type II

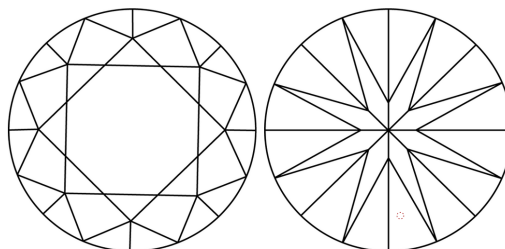
## LABORATORY GROWN DIAMOND REPORT

LG608395406  
Report verification at [lgi.org](https://lgi.org)

## PROPORTIONS



## CLARITY CHARACTERISTICS



### KEY TO SYMBOLS

Red symbols indicate internal characteristics.  
Green symbols indicate external characteristics.

LABORATORY GROWN  
DIAMOND REPORT

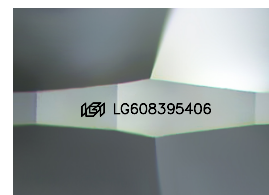
## GRADING SCALES

## CLARITY

IF	VVS <sup>1-2</sup>	VS <sup>1-2</sup>	SI <sup>1-2</sup>	I <sup>1-3</sup>
Internally Flawless	Very Very Slightly Included	Very Slightly Included	Slightly Included	Included

**COLOR**

D E F G H I J Faint Very Light Light



Sample Image Used



© IGI 2020, International Gemological Institute

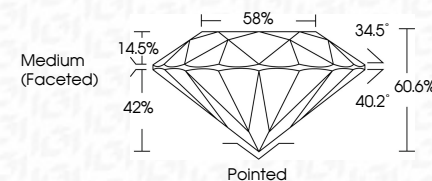
FD - 10 20

## LABORATORY GROWN DIAMOND REPORT

November 24, 2023	
IGI Report Number	LG608395406
Description	LABORATORY GROWN DIAMOND
Shape and Cutting Style	ROUND BRILLIANT
Measurements	7.14 - 7.16 X 4.33 MM

## GRADING RESULTS

Carat Weight	1.38 CARAT
Color Grade	D
Clarity Grade	VVS 1
Cut Grade	IDEAL



### ADDITIONAL GRADING INFORMATION

Polish	EXCELLENT
Symmetry	EXCELLENT
Fluorescence	NONE
Inscription(s)	<del>(G)</del> LG608395406
Comments: As Grown - No indication of post-growth treatment.	
This Laboratory Grown Diamond was created by High Pressure High Temperature (HPHT) growth process.	
Type II	



November 24, 2023	1.38 CARAT
GI Report No. LG08395406	D
ROUND BRILLIANT	VVS 1
	IDEAL
	60.6%
	58%
	Medium (Faceted)
	Painted
	EXCELLENT
	EXCELLENT
	NONE
	#61 LG508395406

Comments:

As Grown - No indication of post-growth treatment.

As Grown - Secondary Growth Diamond was created by High Pressure High temperature (HPHT) growth process.

Type II

**www.igi.org**