



**ELECTRONIC COPY**

**LABORATORY GROWN DIAMOND REPORT**

December 7, 2023  
 IGI Report Number **LG608398221**  
 Description **LABORATORY GROWN  
DIAMOND**  
 Shape and Cutting Style **ROUND BRILLIANT**  
 Measurements **11.00 - 11.04 X 6.83 MM**

**GRADING RESULTS**

Carat Weight **5.11 CARATS**  
 Color Grade **G**  
 Clarity Grade **VVS 2**  
 Cut Grade **IDEAL**

**ADDITIONAL GRADING INFORMATION**

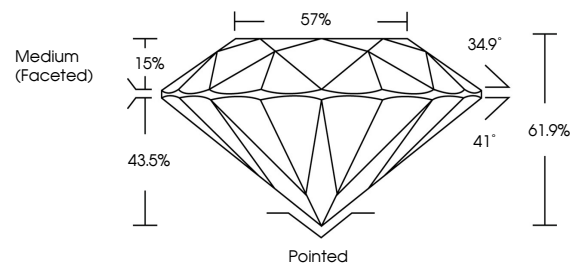
Polish **EXCELLENT**  
 Symmetry **EXCELLENT**  
 Fluorescence **NONE**  
 Inscription(s) **IGI LG608398221**

Comments: HEARTS & ARROWS  
 This Laboratory Grown Diamond was created by  
 Chemical Vapor Deposition (CVD) growth process and  
 may include post-growth treatment.  
 Type IIa

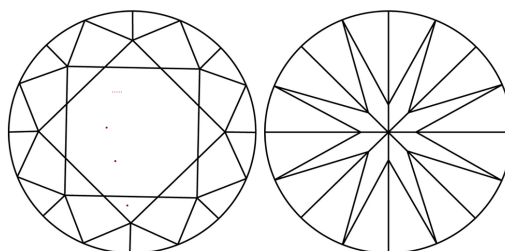
**LABORATORY GROWN DIAMOND REPORT**

**LG608398221**  
 Report verification at [igi.org](http://igi.org)

**PROPORTIONS**



**CLARITY CHARACTERISTICS**



**KEY TO SYMBOLS**

Red symbols indicate internal characteristics.  
 Green symbols indicate external characteristics.



[www.igi.org](http://www.igi.org)

**LABORATORY GROWN  
DIAMOND REPORT**

**GRADING SCALES**

**CLARITY**

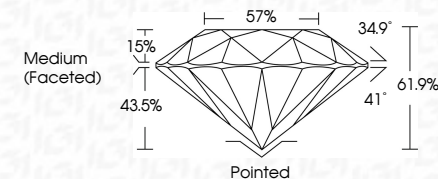
IF	VVS <sup>1-2</sup>	VS <sup>1-2</sup>	SI <sup>1-2</sup>	I <sup>1-3</sup>
Internally Flawless	Very Very Slightly Included	Very Slightly Included	Slightly Included	Included

**COLOR**

D	E	F	G	H	I	J	Faint	Very Light	Light

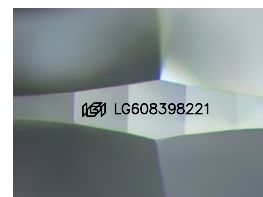
**LABORATORY GROWN DIAMOND REPORT**

December 7, 2023  
 IGI Report Number **LG608398221**  
 Description **LABORATORY GROWN  
DIAMOND**  
 Shape and Cutting Style **ROUND BRILLIANT**  
 Measurements **11.00 - 11.04 X 6.83 MM**  
**GRADING RESULTS**  
 Carat Weight **5.11 CARATS**  
 Color Grade **G**  
 Clarity Grade **VVS 2**  
 Cut Grade **IDEAL**



**ADDITIONAL GRADING INFORMATION**

Polish **EXCELLENT**  
 Symmetry **EXCELLENT**  
 Fluorescence **NONE**  
 Inscription(s) **IGI LG608398221**  
 Comments: HEARTS & ARROWS  
 This Laboratory Grown Diamond was created by  
 Chemical Vapor Deposition (CVD) growth process and  
 may include post-growth treatment.  
 Type IIa



Sample Image Used



December 7, 2023	IGI Report No LG608398221	ROUND BRILLIANT	5.11 CARATS	G	VVS 2	IDEAL	61.9%	57%	Medium (Faceted)	Pointed	EXCELLENT	EXCELLENT	NONE	IGI LG608398221
Carat Weight														
Color Grade														
Clarity Grade														
Cut Grade														
Depth														
Table														
Grade														
Culet														
Polish														
Symmetry														
Fluorescence														
Inscriptions(s)														

Comments: HEARTS & ARROWS  
 This Laboratory Grown Diamond was created by Chemical Vapor Deposition (CVD) growth process and may include post-growth treatment.  
 Type IIa