



ELECTRONIC COPY

LABORATORY GROWN DIAMOND REPORT

LG610312417

Report verification at igi.org

LABORATORY GROWN DIAMOND REPORT

LABORATORY GROWN DIAMOND REPORT

LABORATORY GROWN DIAMOND REPORT

December 8, 2023
IGI Report Number LG610312417
Description LABORATORY GROWN DIAMOND
Shape and Cutting Style ROUND BRILLIANT
Measurements 8.23 - 8.25 X 5.03 MM

GRADING RESULTS

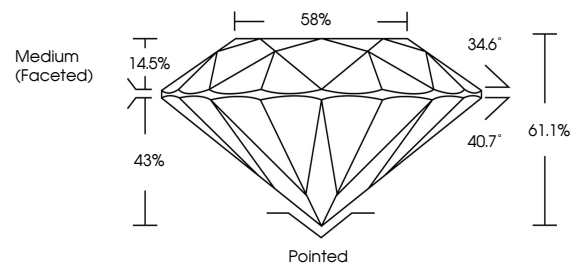
Carat Weight 2.09 CARATS
Color Grade F
Clarity Grade SI 1
Cut Grade IDEAL

ADDITIONAL GRADING INFORMATION

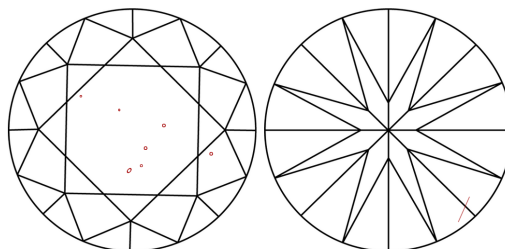
Polish EXCELLENT
Symmetry EXCELLENT
Fluorescence NONE
Inscription(s) IGI LG610312417

Comments: HEARTS & ARROWS
This Laboratory Grown Diamond was created by Chemical Vapor Deposition (CVD) growth process and may include post-growth treatment. Type IIa

PROPORTIONS



CLARITY CHARACTERISTICS



KEY TO SYMBOLS

Red symbols indicate internal characteristics.
Green symbols indicate external characteristics.



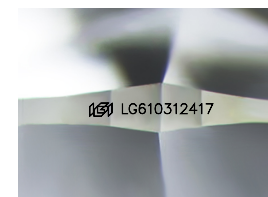
GRADING SCALES

CLARITY

Table mapping clarity grades (IF, VVS, VS, SI, I) to their descriptions (Internally Flawless, Very Very Slightly Included, etc.)

COLOR

Table mapping color grades (D, E, F, G, H, I, J) to their descriptions (Faint, Very Light, Light)



Sample Image Used

December 8, 2023
IGI Report Number LG610312417
Description LABORATORY GROWN DIAMOND
Shape and Cutting Style ROUND BRILLIANT
Measurements 8.23 - 8.25 X 5.03 MM

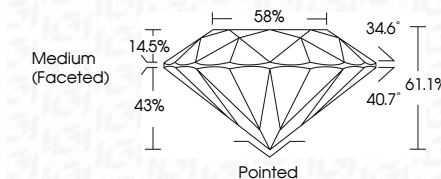
GRADING RESULTS

Carat Weight 2.09 CARATS
Color Grade F
Clarity Grade SI 1
Cut Grade IDEAL

ADDITIONAL GRADING INFORMATION

Polish EXCELLENT
Symmetry EXCELLENT
Fluorescence NONE
Inscription(s) IGI LG610312417

Comments: HEARTS & ARROWS
This Laboratory Grown Diamond was created by Chemical Vapor Deposition (CVD) growth process and may include post-growth treatment. Type IIa



Summary of report details including date, report number, measurements, carat weight, color grade, clarity grade, cut grade, and grading results.