

**ELECTRONIC COPY**

## LABORATORY GROWN DIAMOND REPORT

December 1, 2023	
IGI Report Number	LG610316571
Description	LABORATORY GROWN DIAMOND
Shape and Cutting Style	ROUND BRILLIANT
Measurements	7.11 - 7.17 X 4.31 MM

## GRADING RESULTS

Carat Weight	1.34 CARAT
Color Grade	E
Clarity Grade	VS 1
Cut Grade	IDEAL

### ADDITIONAL GRADING INFORMATION

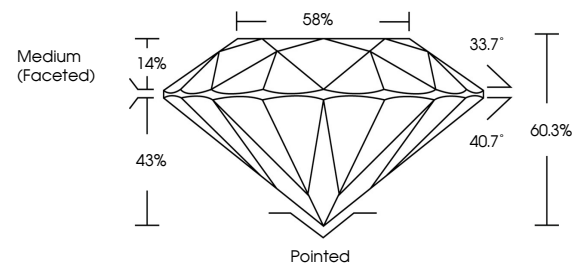
Polish	EXCELLENT
Symmetry	EXCELLENT
Fluorescence	NONE
Inscription(s)	 LG610316571

Comments: As Grown - No indication of post-growth treatment.  
This Laboratory Grown Diamond was created by High Pressure High Temperature (HPHT) growth process.  
Type II

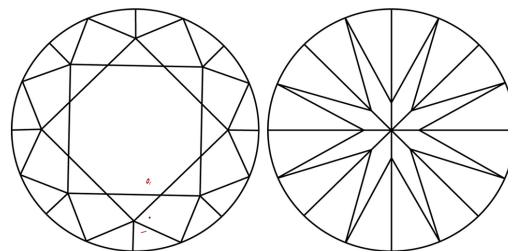
## LABORATORY GROWN DIAMOND REPORT

LG610316571  
Report verification at [igi.org](http://igi.org)

## PROPORTIONS



## CLARITY CHARACTERISTICS



## KEY TO SYMBOLS

Red symbols indicate internal characteristics.  
Green symbols indicate external characteristics.

LABORATORY GROWN  
DIAMOND REPORT

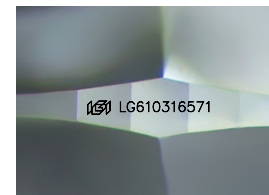
## GRADING SCALES

## CLARITY

IF	VVS <sup>1-2</sup>	VS <sup>1-2</sup>	SI <sup>1-2</sup>	I <sup>1-3</sup>
Internally Flawless	Very Very Slightly Included	Very Slightly Included	Slightly Included	Included

**COLOR**

D E F G H I J Faint Very Light Light



Sample Image Used



© IGI 2020, International Gemological Institute

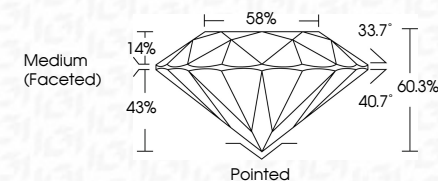
FD - 10 20

## LABORATORY GROWN DIAMOND REPORT

December 1, 2023	
IGI Report Number	LG610316571
Description	LABORATORY GROWN DIAMOND
Shape and Cutting Style	ROUND BRILLIANT
Measurements	7.11 - 7.17 X 4.31 MM

## GRADING RESULTS

Carat Weight	1.34 CARAT
Color Grade	E
Clarity Grade	VS 1
Cut Grade	IDEAL



### ADDITIONAL GRADING INFORMATION

Polish	EXCELLENT
Symmetry	EXCELLENT
Fluorescence	NONE
Inscription(s)	 LG610316571
Comments: As Grown - No indication of post-growth treatment.	
This Laboratory Grown Diamond was created by High Pressure High Temperature (HPHT) growth process.	
Type II	



December 1, 2023	GI Report No. L5610316571	
ROUND BRILLIANT		
Carat Weight	1.34 CARAT	
Color Grade	E	
Clarity Grade	VS 1	
Cut Grade	IDEAL	
Depth	60.3%	
Table	85%	
Girdle	Medium (Faceted)	
Fluorescence	None	
Inscriptions(s)	651 L5610316571	
Comments:	No indication of post-growth treatment.	
	The Laboratory Grown Diamond was created by High Pressure High Temperature (HPHT) growth process.	
	Type II	