



**ELECTRONIC COPY**

**LABORATORY GROWN DIAMOND REPORT**

December 8, 2023  
 IGI Report Number **LG610320020**  
 Description **LABORATORY GROWN  
DIAMOND**  
 Shape and Cutting Style **EMERALD CUT**  
 Measurements **9.08 X 5.67 X 3.90 MM**  
**GRADING RESULTS**  
 Carat Weight **2.02 CARATS**  
 Color Grade **H**  
 Clarity Grade **VS 2**

**ADDITIONAL GRADING INFORMATION**

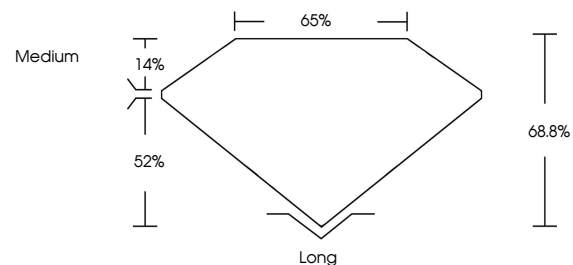
Polish **VERY GOOD**  
 Symmetry **EXCELLENT**  
 Fluorescence **NONE**  
 Inscription(s) **IGI LG610320020**

Comments: This Laboratory Grown Diamond was created by Chemical Vapor Deposition (CVD) growth process and may include post-growth treatment. Type IIa

LG610320020

Report verification at igi.org

**PROPORTIONS**



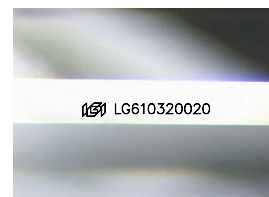
**GRADING SCALES**

**CLARITY**

IF	VVS <sup>1-2</sup>	VS <sup>1-2</sup>	SI <sup>1-2</sup>	I <sup>1-3</sup>
Internally Flawless	Very Very Slightly Included	Very Slightly Included	Slightly Included	Included

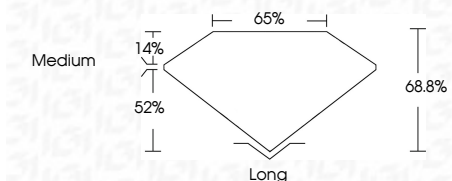
**COLOR**

D	E	F	G	H	I	J	Faint	Very Light	Light
---	---	---	---	---	---	---	-------	------------	-------



Sample Image Used

December 8, 2023  
 IGI Report Number **LG610320020**  
 Description **LABORATORY GROWN  
DIAMOND**  
 Shape and Cutting Style **EMERALD CUT**  
 Measurements **9.08 X 5.67 X 3.90 MM**  
**GRADING RESULTS**  
 Carat Weight **2.02 CARATS**  
 Color Grade **H**  
 Clarity Grade **VS 2**



**ADDITIONAL GRADING INFORMATION**

Polish **VERY GOOD**  
 Symmetry **EXCELLENT**  
 Fluorescence **NONE**  
 Inscription(s) **IGI LG610320020**  
 Comments: This Laboratory Grown Diamond was created by Chemical Vapor Deposition (CVD) growth process and may include post-growth treatment. Type IIa



December 8, 2023  
 IGI Report No LG610320020  
**EMERALD CUT**  
 9.08 X 5.67 X 3.90 MM  
 Carat Weight **2.02 CARATS**  
 Color Grade **H**  
 Clarity Grade **VS 2**  
 Depth **68.8%**  
 Table **65%**  
 Girdle **Medium**  
 Culet **Long**  
 Polish **VERY GOOD**  
 Symmetry **EXCELLENT**  
 Fluorescence **NONE**  
 Inscription(s) **IGI LG610320020**

Comments: This Laboratory Grown Diamond was created by Chemical Vapor Deposition (CVD) growth process and may include post-growth treatment. Type IIa