



ELECTRONIC COPY

LABORATORY GROWN DIAMOND REPORT

| | |
|-------------------------|--|
| December 23, 2023 | |
| IGI Report Number | LG610322133 |
| Description | LABORATORY GROWN DIAMOND |
| Shape and Cutting Style | CUT CORNERED RECTANGULAR MODIFIED BRILLIANT |
| Measurements | 8.76 X 5.82 X 3.92 MM |

GRADING RESULTS

| | |
|---------------|------------|
| Carat Weight | 1.77 CARAT |
| Color Grade | G |
| Clarity Grade | VS 2 |
| Cut Grade | EXCELLENT |

ADDITIONAL GRADING INFORMATION

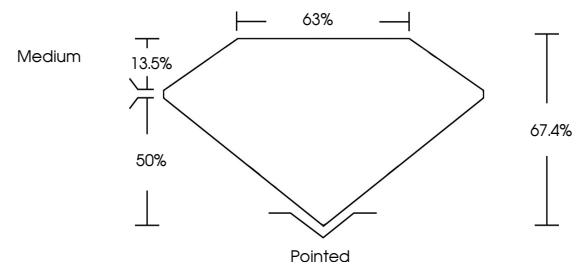
| | |
|----------------|----------------|
| Polish | EXCELLENT |
| Symmetry | EXCELLENT |
| Fluorescence | NONE |
| Inscription(s) | 15 LG610322133 |

Comments: This Laboratory Grown Diamond was created by Chemical Vapor Deposition (CVD) growth process and may include post-growth treatment.
Type IIa

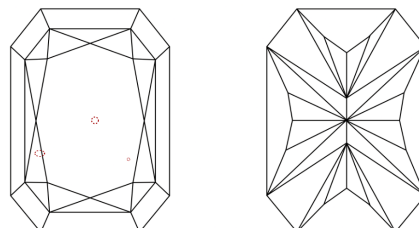
LABORATORY GROWN DIAMOND REPORT

LG610322133
Report verification at lgi.org

PROPORTIONS



CLARITY CHARACTERISTICS



KEY TO SYMBOLS

Red symbols indicate internal characteristics.
Green symbols indicate external characteristics.

LABORATORY GROWN
DIAMOND REPORT

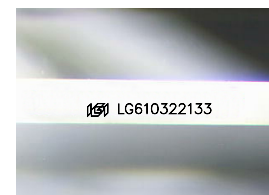
GRADING SCALES

CLARITY

| IF | VVS ¹⁻² | VS ¹⁻² | SI ¹⁻² | I ¹⁻³ |
|------------------------|--------------------------------|---------------------------|----------------------|------------------|
| Internally Flawless | Very Very Slightly Included | Very Slightly Included | Slightly Included | Included |

COLOR

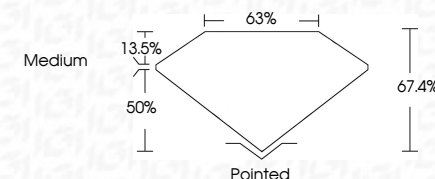
D E F G H I J Faint Very Light Light




Sample Image Used



| | |
|-------------------------|---|
| December 23, 2023 | |
| IGI Report Number | LG610322133 |
| Description | LABORATORY GROWN DIAMOND |
| Shape and Cutting Style | CUT CORNERED RECTANGULAR MODIFIED BRILLIANT |
| Measurements | 8.76 X 5.82 X 3.92 MM |
| GRADING RESULTS | |
| Carat Weight | 1.77 CARAT |
| Color Grade | G |
| Clarity Grade | VS 2 |
| Cut Grade | EXCELLENT |



ADDITIONAL GRADING INFORMATION

| | |
|---|---|
| Polish | EXCELLENT |
| Symmetry | EXCELLENT |
| Fluorescence | NONE |
| Inscription(s) |  LG610322133 |
| <p>Comments: This Laboratory Grown Diamond was created by Chemical Vapor Deposition (CVD) growth process and may include post-growth treatment.</p> <p>Type IIa</p> | |



© IGI 2020, International Gemological Institute

FD - 10 20

www.igi.org

THIS DOCUMENT WAS PRODUCED WITH THE FOLLOWING SECURITY MEASURES: SPECIAL DOCUMENT PAPER, INK SCREENS, WATERMARK, BACKGROUND DESIGNS, HOLOGRAM AND OTHER SECURITY FEATURES NOT LISTED AND DO EXCEED DOCUMENT SECURITY INDUSTRY GUIDELINES

| | |
|---|----------------|
| December 23, 2023 | 1.77 CARAT G |
| IGI REPORT NO. G610322133 | VS2 |
| CUT CORNERED RECT. MODIFIED BRILLIANT | EXCELLENT |
| | 67.4% |
| | 63% |
| | Medium |
| | Pointed |
| | EXCELLENT |
| | EXCELLENT |
| | NONE |
| | 681 G610322133 |
| Carat Weight | |
| Color Grade | |
| Clarity Grade | |
| Cut Grade | |
| Depth | |
| Table | |
| Girdle | |
| Culet | |
| Polish | |
| Symmetry | |
| Fluorescence | |
| Inscription(s) | |
| Comments: This is a Natural, Gemstone, Growth Diamond was created by Chemical Vapor Deposition (CVD) growth process and may include post-growth treatment. | |
| Type IIC | |