

**ELECTRONIC COPY**

## LABORATORY GROWN DIAMOND REPORT

December 23, 2023	
IGI Report Number	LG610322134
Description	LABORATORY GROWN DIAMOND
Shape and Cutting Style	PEAR BRILLIANT
Measurements	10.98 X 6.78 X 4.19 MM

## GRADING RESULTS

Carat Weight	1.76 CARAT
Color Grade	G
Clarity Grade	VS 1
Cut Grade	EXCELLENT

### ADDITIONAL GRADING INFORMATION

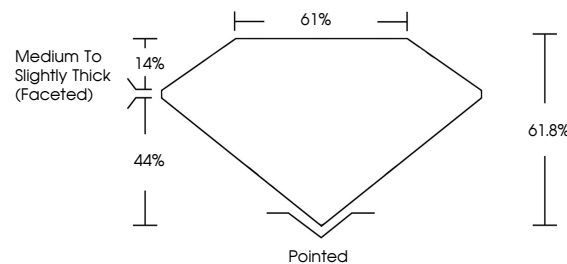
Polish	EXCELLENT
Symmetry	EXCELLENT
Fluorescence	NONE
Inscription(s)	15 LG610322134

Comments: This Laboratory Grown Diamond was created by Chemical Vapor Deposition (CVD) growth process and may include post-growth treatment.  
Type IIa

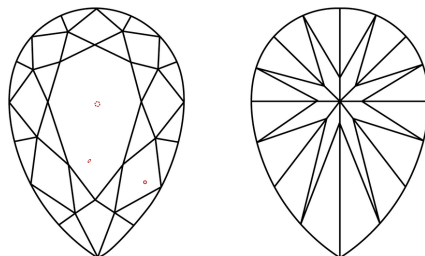
## LABORATORY GROWN DIAMOND REPORT

LG610322134  
Report verification at [igi.org](https://igi.org)

## PROPORTIONS



## CLARITY CHARACTERISTICS



## KEY TO SYMBOLS

Red symbols indicate internal characteristics.  
Green symbols indicate external characteristics.

LABORATORY GROWN  
DIAMOND REPORT

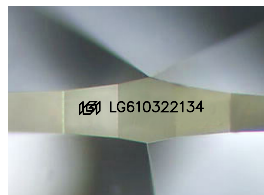
## GRADING SCALES

## CLARITY

IF	VVS <sup>1-2</sup>	VS <sup>1-2</sup>	SI <sup>1-2</sup>	I <sup>1-3</sup>
Internally Flawless	Very Very Slightly Included	Very Slightly Included	Slightly Included	Included

**COLOR**

D E F G H I J Faint Very Light Light



Sample Image Used



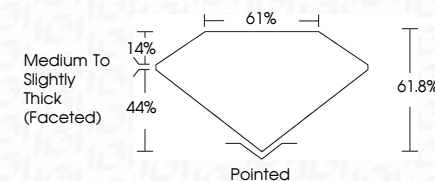
© IGI 2020, International Gemological Institute

FD - 10 20


## LABORATORY GROWN DIAMOND REPORT

December 23, 2023	
IGI Report Number	LG610322134
Description	LABORATORY GROWN DIAMOND
Shape and Cutting Style	PEAR BRILLIANT
Measurements	10.98 X 6.78 X 4.19 MM

GRADING RESULTS	
Carat Weight	1.76 CARAT
Color Grade	G
Clarity Grade	VS 1
Cut Grade	EXCELLENT



### ADDITIONAL GRADING INFORMATION

Polish	EXCELLENT
Symmetry	EXCELLENT
Fluorescence	NONE
Inscription(s)	 LG610322134
<p>Comments: This Laboratory Grown Diamond was created by Chemical Vapor Deposition (CVD) growth process and may include post-growth treatment.</p> <p>Type IIa</p>	



IG

December 23, 2023	GI Growth No L5610322134	1/6 CARAT	V&S 1	EXCELLENT	61.8%	61%	Medium to Slightly Thick (foofsted)	Pointed	EXCELLENT	EXCELLENT	NONE	L691 L5610322134	Comments: Created by Crown Diamond via CVD growth process and may include post-growth treatment.
PEAR BRILLIANT	10.08 X 6.78 X 4.19 MM	Color Grade	Clarity Grade	Cut Grade	Depth	Table	Girdle	Quief	Polish	Symmetry	Fluorescence	Inscription(s)	Type IIA