



**ELECTRONIC COPY**

**LABORATORY GROWN DIAMOND REPORT**

LG610330209

Report verification at igi.org

**LABORATORY GROWN  
DIAMOND REPORT**

**LABORATORY GROWN DIAMOND REPORT**

**LABORATORY GROWN DIAMOND REPORT**

November 29, 2023  
IGI Report Number **LG610330209**  
Description **LABORATORY GROWN  
DIAMOND**  
Shape and Cutting Style **PRINCESS CUT**  
Measurements **6.54 X 6.49 X 4.66 MM**

**GRADING RESULTS**

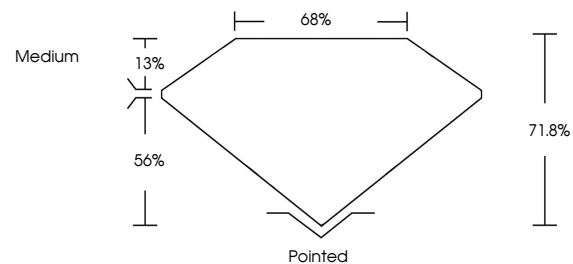
Carat Weight **1.75 CARAT**  
Color Grade **G**  
Clarity Grade **VVS 2**

**ADDITIONAL GRADING INFORMATION**

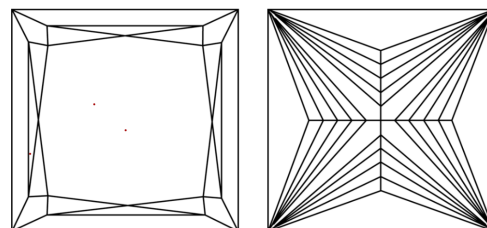
Polish **EXCELLENT**  
Symmetry **EXCELLENT**  
Fluorescence **NONE**  
Inscription(s) **IGI LG610330209**

Comments: This Laboratory Grown Diamond was created by Chemical Vapor Deposition (CVD) growth process and may include post-growth treatment. Type IIa

**PROPORTIONS**



**CLARITY CHARACTERISTICS**



**KEY TO SYMBOLS**

Red symbols indicate internal characteristics.  
Green symbols indicate external characteristics.

**GRADING SCALES**

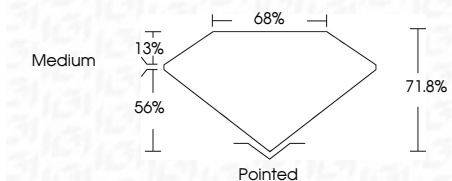
**CLARITY**

IF	VVS <sup>1-2</sup>	VS <sup>1-2</sup>	SI <sup>1-2</sup>	I <sup>1-3</sup>
Internally Flawless	Very Very Slightly Included	Very Slightly Included	Slightly Included	Included

**COLOR**

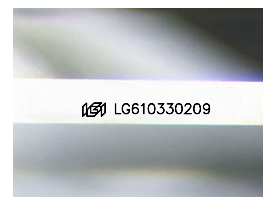
D	E	F	G	H	I	J	Faint	Very Light	Light
---	---	---	---	---	---	---	-------	------------	-------

November 29, 2023  
IGI Report Number **LG610330209**  
Description **LABORATORY GROWN  
DIAMOND**  
Shape and Cutting Style **PRINCESS CUT**  
Measurements **6.54 X 6.49 X 4.66 MM**  
**GRADING RESULTS**  
Carat Weight **1.75 CARAT**  
Color Grade **G**  
Clarity Grade **VVS 2**



**ADDITIONAL GRADING INFORMATION**

Polish **EXCELLENT**  
Symmetry **EXCELLENT**  
Fluorescence **NONE**  
Inscription(s) **IGI LG610330209**  
Comments: This Laboratory Grown Diamond was created by Chemical Vapor Deposition (CVD) growth process and may include post-growth treatment. Type IIa



Sample Image Used



**IGI**

November 29, 2023  
IGI Report No. LG610330209  
**PRINCESS CUT**  
6.54 X 6.49 X 4.66 MM  
Carat Weight **1.75 CARAT**  
Color Grade **G**  
Clarity Grade **VVS 2**  
Depth **71.06%**  
Table **65%**  
Girdle **Medium**  
Culet **Pointed**  
Polish **EXCELLENT**  
Symmetry **EXCELLENT**  
Fluorescence **NONE**  
Inscription(s) **IGI LG610330209**

Comments: This Laboratory Grown Diamond was created by Chemical Vapor Deposition (CVD) growth process and may include post-growth treatment. Type IIa