



**INTERNATIONAL
GEMOLOGICAL
INSTITUTE**

ELECTRONIC COPY

**LABORATORY GROWN
DIAMOND REPORT**

LG610335493

**IGI LABORATORY GROWN
DIAMOND ID REPORT**

December 6, 2023

IGI Report Number **LG610335493**

**CUT CORNERED RECTANGULAR
MODIFIED BRILLIANT**

6.51 X 4.72 X 3.31 MM

Carat Weight 0.99 CARAT
Color Grade FANCY VIVID YELLOW

Clarity Grade VS 1

Polish VERY GOOD
Symmetry EXCELLENT

Fluorescence NONE
Inscription(s) LG610335493

Comments: As Grown - No indication of post-growth treatment. This Laboratory Grown Diamond was created by High Pressure High Temperature (HPHT) growth process.

LABORATORY GROWN DIAMOND REPORT

IGI LABORATORY GROWN DIAMOND IDENTIFICATION REPORT

December 6, 2023

IGI Report Number LG610335493

Description LABORATORY GROWN DIAMOND
Shape and Cutting Style CUT CORNERED RECTANGULAR MODIFIED BRILLIANT

Measurements 6.51 X 4.72 X 3.31 MM

GRADING RESULTS

Carat Weight 0.99 CARAT

Color Grade FANCY VIVID YELLOW

Clarity Grade VS 1

ADDITIONAL GRADING INFORMATION

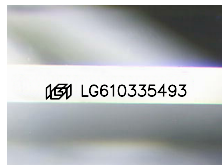
Polish VERY GOOD

Symmetry EXCELLENT

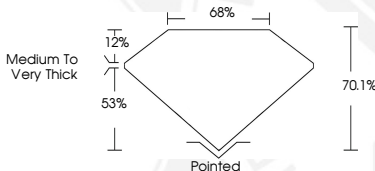
Fluorescence NONE

Inscription(s) LG610335493

Comments: As Grown - No indication of post-growth treatment. This Laboratory Grown Diamond was created by High Pressure High Temperature (HPHT) growth process.



Sample Image Used



**IGI LABORATORY GROWN
DIAMOND ID REPORT**

December 6, 2023

IGI Report Number **LG610335493**

**CUT CORNERED RECTANGULAR
MODIFIED BRILLIANT**

6.51 X 4.72 X 3.31 MM

Carat Weight 0.99 CARAT
Color Grade FANCY VIVID YELLOW

Clarity Grade VS 1

Polish VERY GOOD
Symmetry EXCELLENT

Fluorescence NONE
Inscription(s) LG610335493

Comments: As Grown - No indication of post-growth treatment. This Laboratory Grown Diamond was created by High Pressure High Temperature (HPHT) growth process.

THIS DOCUMENT WAS PRODUCED WITH THE FOLLOWING SECURITY MEASURES: SPECIAL DOCUMENT PAPER, INK SCREENS, WATERMARK, BACKGROUND DESIGN, HOLOGRAM AND OTHER SECURITY FEATURES NOT LISTED AND DO EXCEED DOCUMENT SECURITY INDUSTRY GUIDELINES.

For terms & conditions and to verify this report, please visit www.igi.org