



**INTERNATIONAL  
GEMOLOGICAL  
INSTITUTE**

**ELECTRONIC COPY**

**LABORATORY GROWN  
DIAMOND REPORT**

**LG610347931**

**IGI LABORATORY GROWN  
DIAMOND ID REPORT**

December 8, 2023

IGI Report Number **LG610347931**

**SQUARE CUSHION BRILLIANT**

**5.46 X 5.34 X 3.83 MM**

Carat Weight 0.94 CARAT  
Color Grade FANCY INTENSE PINK  
Clarity Grade VS 1  
Polish EXCELLENT  
Symmetry EXCELLENT  
Fluorescence SLIGHT  
Inscription(s) LG610347931

Comments: This Laboratory Grown Diamond was created by Chemical Vapor Deposition (CVD) growth process. Indications of post-growth treatment.

**LABORATORY GROWN DIAMOND REPORT**

**IGI LABORATORY GROWN DIAMOND IDENTIFICATION REPORT**

December 8, 2023

IGI Report Number LG610347931

Description LABORATORY GROWN DIAMOND

Shape and Cutting Style SQUARE CUSHION BRILLIANT

Measurements 5.46 X 5.34 X 3.83 MM

**GRADING RESULTS**

Carat Weight 0.94 CARAT

Color Grade FANCY INTENSE PINK

Clarity Grade VS 1

**ADDITIONAL GRADING INFORMATION**

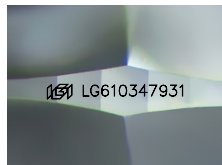
Polish EXCELLENT

Symmetry EXCELLENT

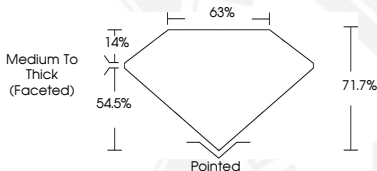
Fluorescence SLIGHT

Inscription(s) LG610347931

Comments: This Laboratory Grown Diamond was created by Chemical Vapor Deposition (CVD) growth process. Indications of post-growth treatment.



Sample Image Used



**IGI LABORATORY GROWN  
DIAMOND ID REPORT**

December 8, 2023

IGI Report Number **LG610347931**

**SQUARE CUSHION BRILLIANT**

**5.46 X 5.34 X 3.83 MM**

Carat Weight 0.94 CARAT  
Color Grade FANCY INTENSE PINK  
Clarity Grade VS 1  
Polish EXCELLENT  
Symmetry EXCELLENT  
Fluorescence SLIGHT  
Inscription(s) LG610347931

Comments: This Laboratory Grown Diamond was created by Chemical Vapor Deposition (CVD) growth process. Indications of post-growth treatment.

THIS DOCUMENT WAS PRODUCED WITH THE FOLLOWING SECURITY MEASURES: SPECIAL DOCUMENT PAPER, INK SCREENS, WATERMARK, BACKGROUND DESIGN, HOLOGRAM AND OTHER SECURITY FEATURES NOT LISTED AND DO EXCEED DOCUMENT SECURITY INDUSTRY GUIDELINES.

For terms & conditions and to verify this report, please visit [www.igi.org](http://www.igi.org)