



ELECTRONIC COPY

LABORATORY GROWN DIAMOND REPORT

LG610350420

Report verification at igi.org

LABORATORY GROWN
DIAMOND REPORT

LABORATORY GROWN DIAMOND REPORT

LABORATORY GROWN DIAMOND REPORT

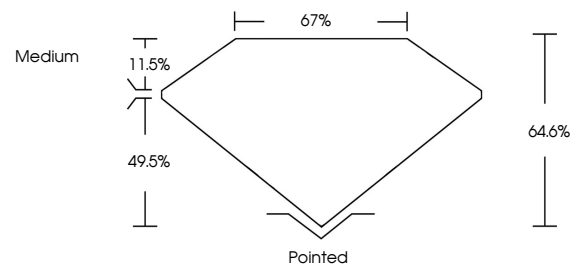
December 13, 2023
 IGI Report Number **LG610350420**
 Description **LABORATORY GROWN
DIAMOND**
 Shape and Cutting Style **SQUARE EMERALD CUT**
 Measurements **8.04 X 7.93 X 5.12 MM**
GRADING RESULTS
 Carat Weight **3.04 CARATS**
 Color Grade **FANCY INTENSE PINK**
 Clarity Grade **VS 2**

ADDITIONAL GRADING INFORMATION

Polish **EXCELLENT**
 Symmetry **EXCELLENT**
 Fluorescence **SLIGHT**
 Inscription(s) **IGI LG610350420**

Comments: This Laboratory Grown Diamond was created by Chemical Vapor Deposition (CVD) growth process.
 Indications of post-growth treatment.

PROPORTIONS



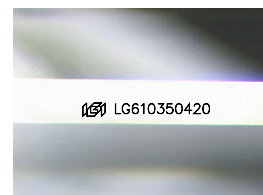
GRADING SCALES

CLARITY

IF	VVS ¹⁻²	VS ¹⁻²	SI ¹⁻²	I ¹⁻³
Internally Flawless	Very Very Slightly Included	Very Slightly Included	Slightly Included	Included

COLOR

D	E	F	G	H	I	J	Faint	Very Light	Light
Light Tint	Fancy Light	Fancy	Fancy Intense	Fancy Vivid					



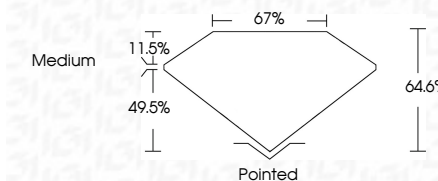
Sample Image Used

December 13, 2023
 IGI Report Number **LG610350420**
 Description **LABORATORY GROWN
DIAMOND**
 Shape and Cutting Style **SQUARE EMERALD CUT**
 Measurements **8.04 X 7.93 X 5.12 MM**
GRADING RESULTS
 Carat Weight **3.04 CARATS**
 Color Grade **FANCY INTENSE PINK**
 Clarity Grade **VS 2**

ADDITIONAL GRADING INFORMATION

Polish **EXCELLENT**
 Symmetry **EXCELLENT**
 Fluorescence **SLIGHT**
 Inscription(s) **IGI LG610350420**

Comments: This Laboratory Grown Diamond was created by Chemical Vapor Deposition (CVD) growth process.
 Indications of post-growth treatment.



IGI

December 13, 2023
 IGI Report No LG610350420
SQUARE EMERALD CUT
3.04 CARATS
FANCY INTENSE PINK
VS 2
8.04 X 7.93 X 5.12 MM
 Carat Weight
 Color Grade
 Clarity Grade
 Depth
 Table
 Girdle
 Medium
 Pointed
 EXCELLENT
 EXCELLENT
 SLIGHT
 IGI LG610350420

Comments: This Laboratory Grown Diamond was created by Chemical Vapor Deposition (CVD) growth process.
 Indications of post-growth treatment.