



**ELECTRONIC COPY**

LG610352625  
Report verification at igi.org

**LABORATORY GROWN DIAMOND REPORT**

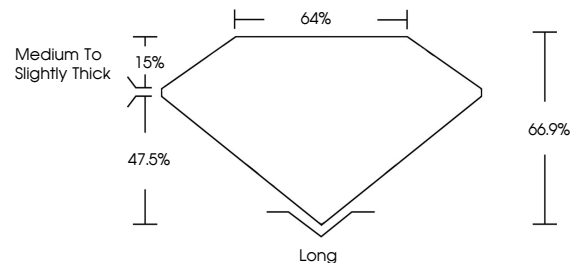
December 7, 2023  
IGI Report Number **LG610352625**  
Description **LABORATORY GROWN DIAMOND**  
Shape and Cutting Style **EMERALD CUT**  
Measurements **16.21 X 10.59 X 7.08 MM**  
**GRADING RESULTS**  
Carat Weight **12.41 CARATS**  
Color Grade **I**  
Clarity Grade **VS 2**

**ADDITIONAL GRADING INFORMATION**

Polish **EXCELLENT**  
Symmetry **EXCELLENT**  
Fluorescence **NONE**  
Inscription(s) **IGI LG610352625**

Comments: This Laboratory Grown Diamond was created by Chemical Vapor Deposition (CVD) growth process and may include post-growth treatment. Type IIa

**PROPORTIONS**



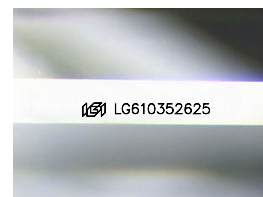
**GRADING SCALES**

**CLARITY**

IF	VVS <sup>1-2</sup>	VS <sup>1-2</sup>	SI <sup>1-2</sup>	I <sup>1-3</sup>
Internally Flawless	Very Very Slightly Included	Very Slightly Included	Slightly Included	Included

**COLOR**

D	E	F	G	H	I	J	Faint	Very Light	Light
---	---	---	---	---	---	---	-------	------------	-------

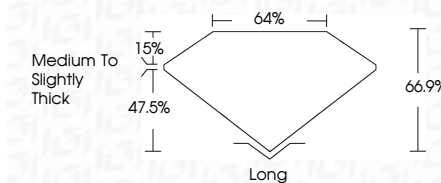


Sample Image Used

December 7, 2023  
IGI Report Number **LG610352625**  
Description **LABORATORY GROWN DIAMOND**  
Shape and Cutting Style **EMERALD CUT**  
Measurements **16.21 X 10.59 X 7.08 MM**  
**GRADING RESULTS**  
Carat Weight **12.41 CARATS**  
Color Grade **I**  
Clarity Grade **VS 2**

**ADDITIONAL GRADING INFORMATION**

Polish **EXCELLENT**  
Symmetry **EXCELLENT**  
Fluorescence **NONE**  
Inscription(s) **IGI LG610352625**  
Comments: This Laboratory Grown Diamond was created by Chemical Vapor Deposition (CVD) growth process and may include post-growth treatment. Type IIa



**IGI**

December 7, 2023  
IGI Report No **LG610352625**  
**EMERALD CUT**  
**16.21 X 10.59 X 7.08 MM**  
Carat Weight **12.41 CARATS**  
Color Grade **I**  
Clarity Grade **VS 2**  
Table **64%**  
Girdle **47.5%**  
Medium to Slightly Thick  
Culet **Long**  
Polish **EXCELLENT**  
Symmetry **EXCELLENT**  
Fluorescence **NONE**  
Inscription(s) **IGI LG610352625**

Comments: This Laboratory Grown Diamond was created by Chemical Vapor Deposition (CVD) growth process and may include post-growth treatment. Type IIa