



**INTERNATIONAL
GEMOLOGICAL
INSTITUTE**

ELECTRONIC COPY

**LABORATORY GROWN
DIAMOND REPORT**

LG611359550

**IGI LABORATORY GROWN
DIAMOND ID REPORT**

December 29, 2023

IGI Report Number **LG611359550**

CUSHION BRILLIANT

6.26 X 5.10 X 3.18 MM

Carat Weight	0.85 CARAT
Color Grade	G
Clarity Grade	IF
Polish	EXCELLENT
Symmetry	VERY GOOD
Fluorescence	NONE
Inscription(s)	LG611359550

Comments: As Grown - No indication of post-growth treatment. This Laboratory Grown Diamond was created by High Pressure High Temperature (HPHT) growth process. Type II Faint Blue

LABORATORY GROWN DIAMOND REPORT

IGI LABORATORY GROWN DIAMOND IDENTIFICATION REPORT

December 29, 2023

IGI Report Number **LG611359550**

Description **LABORATORY GROWN DIAMOND**

Shape and Cutting Style **CUSHION BRILLIANT**

Measurements **6.26 X 5.10 X 3.18 MM**

GRADING RESULTS

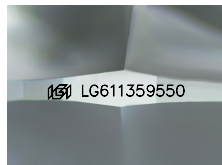
Carat Weight	0.85 CARAT
Color Grade	G
Clarity Grade	INTERNALLY FLAWLESS

ADDITIONAL GRADING INFORMATION

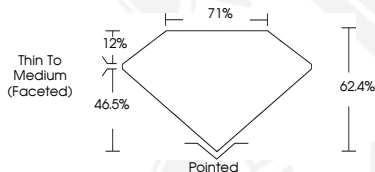
Polish	EXCELLENT
Symmetry	VERY GOOD
Fluorescence	NONE
Inscription(s)	LG611359550

Comments: As Grown - No indication of post-growth treatment. This Laboratory Grown Diamond was created by High Pressure High Temperature (HPHT) growth process.

Type II
Faint Blue



Sample Image Used



**IGI LABORATORY GROWN
DIAMOND ID REPORT**

December 29, 2023

IGI Report Number **LG611359550**

CUSHION BRILLIANT

6.26 X 5.10 X 3.18 MM

Carat Weight	0.85 CARAT
Color Grade	G
Clarity Grade	IF
Polish	EXCELLENT
Symmetry	VERY GOOD
Fluorescence	NONE
Inscription(s)	LG611359550

Comments: As Grown - No indication of post-growth treatment. This Laboratory Grown Diamond was created by High Pressure High Temperature (HPHT) growth process. Type II Faint Blue

THIS DOCUMENT WAS PRODUCED WITH THE FOLLOWING SECURITY MEASURES: SPECIAL DOCUMENT PAPER, INK SCREENS, WATERMARK, BACKGROUND DESIGN, HOLOGRAM AND OTHER SECURITY FEATURES NOT LISTED AND DO EXCEED DOCUMENT SECURITY INDUSTRY GUIDELINES.

For terms & conditions and to verify this report, please visit www.igi.org