



ELECTRONIC COPY

LG611363218

Report verification at igi.org

LABORATORY GROWN DIAMOND REPORT

December 16, 2023
IGI Report Number LG611363218
Description LABORATORY GROWN DIAMOND
Shape and Cutting Style ROUND BRILLIANT
Measurements 8.53 - 8.58 X 5.33 MM

GRADING RESULTS

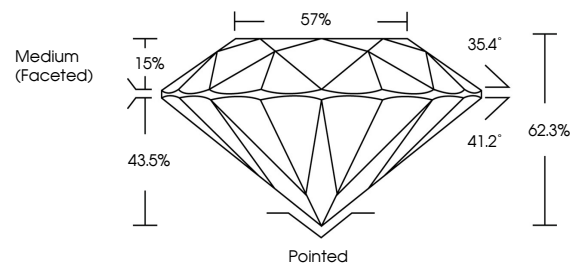
Carat Weight 2.40 CARATS
Color Grade G
Clarity Grade VS 2
Cut Grade IDEAL

ADDITIONAL GRADING INFORMATION

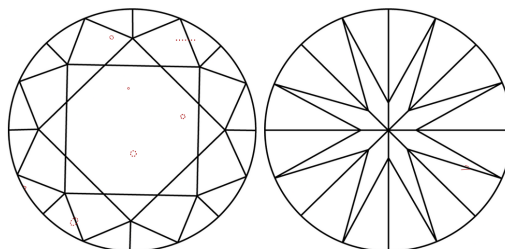
Polish EXCELLENT
Symmetry EXCELLENT
Fluorescence NONE
Inscription(s) IGI LG611363218

Comments: HEARTS & ARROWS
This Laboratory Grown Diamond was created by Chemical Vapor Deposition (CVD) growth process and may include post-growth treatment. Type IIa

PROPORTIONS



CLARITY CHARACTERISTICS



KEY TO SYMBOLS

Red symbols indicate internal characteristics.
Green symbols indicate external characteristics.



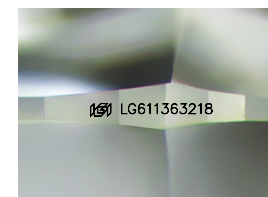
GRADING SCALES

CLARITY

Table with 5 columns: IF, VVS 1-2, VS 1-2, SI 1-2, I 1-3. Row 1: Internally Flawless, Very Very Slightly Included, Very Slightly Included, Slightly Included, Included.

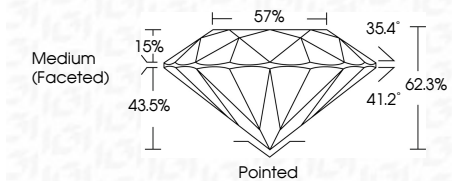
COLOR

Table with 10 columns: D, E, F, G, H, I, J, Faint, Very Light, Light.



Sample Image Used

December 16, 2023
IGI Report Number LG611363218
Description LABORATORY GROWN DIAMOND
Shape and Cutting Style ROUND BRILLIANT
Measurements 8.53 - 8.58 X 5.33 MM
GRADING RESULTS
Carat Weight 2.40 CARATS
Color Grade G
Clarity Grade VS 2
Cut Grade IDEAL



ADDITIONAL GRADING INFORMATION

Polish EXCELLENT
Symmetry EXCELLENT
Fluorescence NONE
Inscription(s) IGI LG611363218

Comments: HEARTS & ARROWS
This Laboratory Grown Diamond was created by Chemical Vapor Deposition (CVD) growth process and may include post-growth treatment. Type IIa



Summary table with columns: Date, Report No, Shape, Carat Weight, Color Grade, Clarity Grade, Depth, Table, Girdle, Cutlet, Polish, Symmetry, Fluorescence, Inscription(s).

