

ELECTRONIC COPY

LABORATORY GROWN DIAMOND REPORT

December 12, 2023	
IGI Report Number	LG611377362
Description	LABORATORY GROWN DIAMOND
Shape and Cutting Style	ROUND BRILLIANT
Measurements	9.18 - 9.26 X 5.77 MM

GRADING RESULTS

Carat Weight	3.01 CARATS
Color Grade	F
Clarity Grade	VS 2
Cut Grade	EXCELLENT

ADDITIONAL GRADING INFORMATION

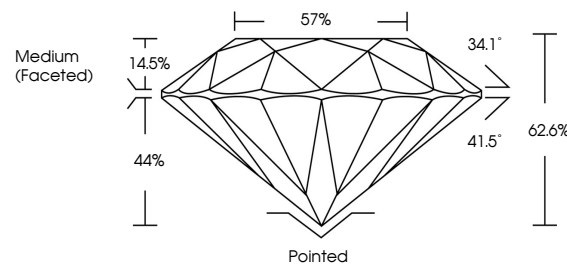
Polish	EXCELLENT
Symmetry	EXCELLENT
Fluorescence	NONE
Inscription(s)	15 LG611377362

Comments: This Laboratory Grown Diamond was created by Chemical Vapor Deposition (CVD) growth process and may include post-growth treatment.
Type IIa

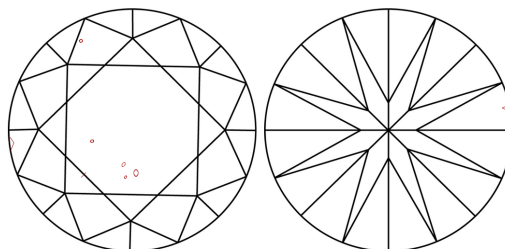
LABORATORY GROWN DIAMOND REPORT

LG611377362
Report verification at igi.org

PROPORTIONS



CLARITY CHARACTERISTICS



KEY TO SYMBOLS

Red symbols indicate internal characteristics.
Green symbols indicate external characteristics.

LABORATORY GROWN
DIAMOND REPORT

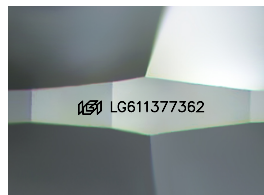
GRADING SCALES

CLARITY

IF	VVS ¹⁻²	VS ¹⁻²	SI ¹⁻²	I ¹⁻³
Internally Flawless	Very Very Slightly Included	Very Slightly Included	Slightly Included	Included

COLOR

D E F G H I J Faint Very Light Light



Sample Image Used

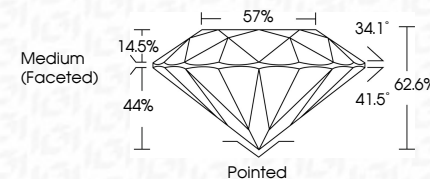


© IGI 2020, International Gemological Institute


FD - 10 20



December 12, 2023	
IGI Report Number	LG611377362
Description	LABORATORY GROWN DIAMOND
Shape and Cutting Style	ROUND BRILLIANT
Measurements	9.18 - 9.26 X 5.77 MM
GRADING RESULTS	
Carat Weight	3.01 CARATS
Color Grade	F
Clarity Grade	VS 2
Cut Grade	EXCELLENT



ADDITIONAL GRADING INFORMATION

Polish	EXCELLENT
Symmetry	EXCELLENT
Fluorescence	NONE
Inscription(s)	 LG611377362
<p>Comments: This Laboratory Grown Diamond was created by Chemical Vapor Deposition (CVD) growth process and may include post-growth treatment.</p> <p>Type Ila</p>	

December 12, 2023	Carat Weight	3.01 CARATS
GI Report No LG61137752	Color Grade	F
ROUND BRILLIANT	Clarity Grade	VS 2
	Cut Grade	EXCELLENT
	Depth	62.6%
	Table	57%
	Girdle	Medium (faceted)
	Culet	Pointed
	Polish	EXCELLENT
	Symmetry	EXCELLENT
	Fluorescence	NONE
	Inscriptions(s)	661 LG61137752

Comments:

This Laboratory Grown Diamond was created by Chemical Vapor Deposition (CVD) and may include post-growth treatment.

Type IIa