



**ELECTRONIC COPY**

**LABORATORY GROWN DIAMOND REPORT**

December 13, 2023  
 IGI Report Number **LG611393425**  
 Description **LABORATORY GROWN  
DIAMOND**  
 Shape and Cutting Style **CUT CORNERED RECTANGULAR  
MODIFIED BRILLIANT**  
 Measurements **7.02 X 4.94 X 3.36 MM**

**GRADING RESULTS**

Carat Weight **1.03 CARAT**  
 Color Grade **E**  
 Clarity Grade **VVS 2**

**ADDITIONAL GRADING INFORMATION**

Polish **EXCELLENT**  
 Symmetry **EXCELLENT**  
 Fluorescence **NONE**

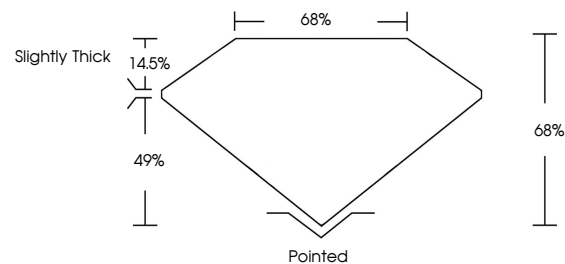
Inscription(s) **IGI LG611393425**

Comments: As Grown - No indication of post-growth treatment.  
 This Laboratory Grown Diamond was created by High Pressure High Temperature (HPHT) growth process.  
 Type II

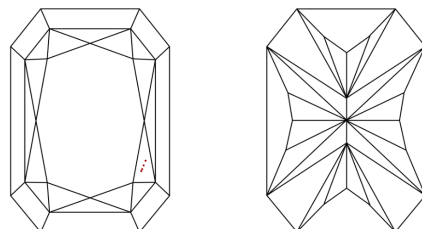
**LABORATORY GROWN DIAMOND REPORT**

**LG611393425**  
 Report verification at [igi.org](http://igi.org)

**PROPORTIONS**



**CLARITY CHARACTERISTICS**



**KEY TO SYMBOLS**

Red symbols indicate internal characteristics.  
 Green symbols indicate external characteristics.

**LABORATORY GROWN  
DIAMOND REPORT**

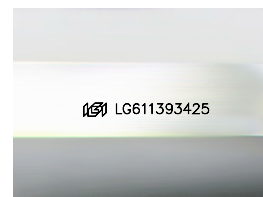
**GRADING SCALES**

**CLARITY**

| IF                  | VVS <sup>1-2</sup>          | VS <sup>1-2</sup>      | SI <sup>1-2</sup> | I <sup>1-3</sup> |
|---------------------|-----------------------------|------------------------|-------------------|------------------|
| Internally Flawless | Very Very Slightly Included | Very Slightly Included | Slightly Included | Included         |

**COLOR**

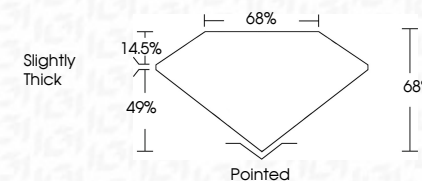
| D | E | F | G | H | I | J | Faint | Very Light | Light |
|---|---|---|---|---|---|---|-------|------------|-------|
|---|---|---|---|---|---|---|-------|------------|-------|



Sample Image Used

**LABORATORY GROWN DIAMOND REPORT**

December 13, 2023  
 IGI Report Number **LG611393425**  
 Description **LABORATORY GROWN  
DIAMOND**  
 Shape and Cutting Style **CUT CORNERED  
RECTANGULAR MODIFIED  
BRILLIANT**  
 Measurements **7.02 X 4.94 X 3.36 MM**  
**GRADING RESULTS**  
 Carat Weight **1.03 CARAT**  
 Color Grade **E**  
 Clarity Grade **VVS 2**



**ADDITIONAL GRADING INFORMATION**

Polish **EXCELLENT**  
 Symmetry **EXCELLENT**  
 Fluorescence **NONE**  
 Inscription(s) **IGI LG611393425**  
 Comments: As Grown - No indication of post-growth treatment.  
 This Laboratory Grown Diamond was created by High Pressure High Temperature (HPHT) growth process.  
 Type II



December 13, 2023  
 IGI Report No LG611393425  
**CUT CORNERED RECT. MODIFIED BRILLIANT**  
**7.02 X 4.94 X 3.36 MM**  
 Carat Weight **1.03 CARAT**  
 Color Grade **E**  
 Clarity Grade **VVS 2**  
 Depth **68%**  
 Table **68%**  
 Girdle **Slightly Thick**  
 Culet **Pointed**  
 Polish **EXCELLENT**  
 Symmetry **EXCELLENT**  
 Fluorescence **NONE**  
 Inscription(s) **IGI LG611393425**

Comments: As Grown - No indication of post-growth treatment.  
 This Laboratory Grown Diamond was created by High Pressure High Temperature (HPHT) growth process.  
 Type II

